



INSPIRATIONAL CATALOGUE

POWERED BY HYDRAULICS





UTILIZE HYDRAULICS - INCREASE PRODUCTIVITY



## CONTENTS



### ELECTRICITY

HG Hydraulic Generator  
HGV POWER BOX Variable Hydraulic Generator System  
HGV Variable Hydraulic Generator System  
HWG Hydraulic Welding Generator  
HGG Hydraulic Ground Power Generator



### HIGH PRESSURE WATER

HPW Hydraulic High Pressure Water Pump  
HPW Hydraulic Power Washer  
KPL High Pressure Street Washing Unit  
HPW-DUST High Pressure Dust Suppression System  
PPL High Pressure Pipe Cleaning Unit  
HPW-FIRE High Pressure Firefighting System  
FP Firefighting Piercing Kit  
HDF Hydraulic Drilling Fluid Pump  
JPL High Pressure Bin Washing System  
HSP Hydraulic Submersible Pump



### COMPRESSED AIR

HK Hydraulic Piston Compressor  
HKL Hydraulic Rotary Vane Compressor  
HKR Hydraulic Screw Compressor



### MAGNET POWER

HMG PRO Hydraulic Magnet Generator  
MAG Magnet  
HMAG PRO Hydraulic Magnet



### VIBRATION

HVB Hydraulic Vibra  
HVD Hydraulic Directional Vibra  
HRC Hydraulic Reversal Cylinder



### POWER BOOSTING

HPI Hydraulic Pressure Intensifier  
HPIC Hydraulic Pressure Intensifier for Cylinder



### KNOW-HOW

Hydraulic Power Take-off (PTO)  
Hydraulic Power Unit Technology  
HEU Hydraulic Expansion Unit  
HRU Hydraulic Rescue Unit  
De-icing Technology  
Installation Valves  
HHK Hydraulic Grinder  
HV/HVY Hydraulic Winch / Winch Unit

## CONTACT

**Menotie 3**  
**33470 Ylöjärvi**  
**FINLAND**

**tel. + 358 3 3488 200**  
**info@dynaset.com**



[www.dynaset.com](http://www.dynaset.com)

[www.facebook.com/dynaset](http://www.facebook.com/dynaset)

[www.youtube.com/dynasetoy](http://www.youtube.com/dynasetoy)

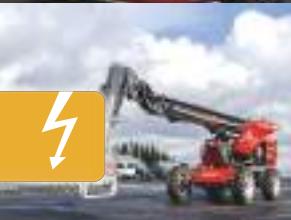
HG

HYDRAULIC GENERATOR





TCB











## HG - 50Hz, IP23

		HG 3,5 17	HG 5 24	HG 6,5 33	HG 10 48	HG 12 57
<b>OUTPUT CHARACTERISTICS</b>						
Output power max.	<b>kVA</b>	3,5	5	6,5	10	12
Power factor / power	<b>cos φ/kW</b>	1,0/3,5	1,0/5,0	0,8/5,2	0,8/8,0	0,8/9,6
Output Voltage, VAC	<b>1 phase</b>	230	230	230	230	230
	<b>3 phase</b>	-	-	400	400	400
Nominal Current, A	<b>1 phase</b>	15,2	21,7	14,2	21,7	26,1
	<b>3 phase</b>	-	-	9,4	14,4	17,3
Sockets (1 phase / 3 phase / cable K)		2 / - / -	2 / - / -	2 / 1 / -	2 / 1 / -	2 / 1 / -
<b>HYDRAULIC POWER REQUIREMENTS</b>						
Flow min.	<b>l / min (U.S. gpm)</b>	19 (5.02)	26 (6.86)	35 (9.24)	50 (13.2)	59 (15.58)
Pressure max.	<b>bar (psi)</b>	210 (3046)	210 (3046)	210 (3046)	210 (3046)	210 (3046)
<b>OVERALL DIMENSIONS</b>						
Length	<b>mm (in)</b>	428 (16.9)	455 (17.9)	504 (19.8)	559 (22)	557 (21.9)
Width	<b>mm (in)</b>	212 (8.3)	212 (8.3)	212 (8.3)	212 (8.3)	290 (11.4)
Height	<b>mm (in)</b>	227 (8.9)	227 (8.9)	325 (12.8)	314 (12.4)	349 (13.7)
Weight	<b>kg (lbs)</b>	26 (57)	29 (64)	43 (95)	57 (126)	60 (132)
HG Hydraulic Generators are available up to 350 kVA. Models available with separate electric central and connection cable. Visit our website <a href="http://www.dynaset.com">www.dynaset.com</a> for detailed information.						



## HG - 50Hz, IP23

		HG 15 66	HG 20 92	HG 20 60	HG 30 120	HG 30 90
<b>OUTPUT CHARACTERISTICS</b>						
Output power max.	<b>kVA</b>	15	20	20	30	30
Power factor / power	<b>cos φ/kW</b>	0,8/12,0	0,8/16,0	0,8/16,0	0,8/24,0	0,8/24,0
Output Voltage, VAC	<b>1 phase</b>	230	230	230	230	230
	<b>3 phase</b>	400	400	400	400	400
Nominal Current, A	<b>1 phase</b>	32,6	43,5	43,5	65,2	65,2
	<b>3 phase</b>	21,7	28,9	28,9	43,3	43,3
Sockets (1 phase / 3 phase / cable K)		2 / 1 / -	2 / 1 / -	2 / 1 / -	- / - / K	- / - / K
<b>HYDRAULIC POWER REQUIREMENTS</b>						
Flow min.	<b>l / min (U.S. gpm)</b>	68 (17.95)	94 (24.82)	62 (16.37)	122 (32.21)	92 (24.29)
Pressure max.	<b>bar (psi)</b>	210 (3046)	210 (3046)	420 (6092)	250 (3626)	420 (6092)
<b>OVERALL DIMENSIONS</b>						
Length	<b>mm (in)</b>	819 (32.2)	870 (34.3)	924 (36.4)	933 (36.7)	908 (35.7)
Width	<b>mm (in)</b>	350 (13.8)	350 (13.8)	350 (13.8)	328 (13.8)	328 (13.8)
Height	<b>mm (in)</b>	462 (18.2)	462 (18.2)	462 (18.2)	433 (17)	433 (17)
Weight	<b>kg (lbs)</b>	98 (216)	120 (265)	120 (265)	175 (386)	173 (382)
HG Hydraulic Generators are available up to 350 kVA. Models available with separate electric central and connection cable. Visit our website <a href="http://www.dynaset.com">www.dynaset.com</a> for detailed information.						



## HG - 50Hz, IP23

		HG 40 165	HG 40 90	HG 50 210	HG 50 120	HG 60 120	HG 70 165
<b>OUTPUT CHARACTERISTICS</b>							
Output power max.	kVA	40	40	50	50	60	70
Power factor / power	cos φ/kW	0,8/32,0	0,8/32,0	0,8/40,0	0,8/40,0	0,8/48,0	0,8/56,0
Output Voltage, VAC	1 phase	230	230	230	230	230	230
	3 phase	400	400	400	400	400	400
Nominal Current, A	1 phase	87,0	87,0	130,4	130,4	156,5	182,6
	3 phase	57,7	57,7	72,2	72,2	86,6	101,0
Sockets (1 phase / 3 phase) / cable K		- / - / K	- / - / K	- / - / K	- / - / K	- / - / K	- / - / K
<b>HYDRAULIC POWER REQUIREMENTS</b>							
Flow min.	l / min (U.S. gpm)	167 (44.09)	92 (24.29)	212 (55.97)	122 (32.21)	122 (32.21)	167 (44.09)
Pressure max.	bar (psi)	250 (3626)	420 (6092)	250 (3626)	420 (6092)	420 (6092)	420 (6092)
<b>OVERALL DIMENSIONS</b>							
Length	mm (in)	1003 (39.5)	996 (39.2)	1250 (49.2)	1135 (44.7)	custom	custom
Width	mm (in)	402 (15.8)	402 (15.8)	402 (15.8)	402 (15.8)	custom	custom
Height	mm (in)	478 (18.8)	478 (18.8)	490 (19.3)	490 (19.3)	custom	custom
Weight	kg (lbs)	198 (437)	198 (437)	249 (549)	249 (549)	custom	custom
HG Hydraulic Generators are available up to 350 kVA. Models available with separate electric central and connection cable. Visit our website <a href="http://www.dynaset.com">www.dynaset.com</a> for detailed information.							



## HG - 50Hz, IP54

		HG 4.1 24	HG 6.6 33	HG 10.1 48	HG 12.1 27	HG 15.1 57	HG 20.1 81	HG 30.1 90
<b>OUTPUT CHARACTERISTICS</b>								
Output power max.	<b>kVA</b>	4,1	6,6	10,1	12,1	15,1	20,1	30,1
Power factor / power	<b>cos φ/kW</b>	1,0/4,1	0,8/5,28	0,8/8,0	0,8/9,68	0,8/12,08	0,8/16,08	0,8/24,08
Output Voltage, VAC	<b>1 phase</b>	230	230	230	230	230	230	230
	<b>3 phase</b>		400	400	400	400	400	400
Nominal Current, A	<b>1 phase</b>	17,8	14,2	21,7	26,1	32,6	43,5	65,2
	<b>3 phase</b>	-	9,5	14,6	17,5	21,8	29,0	43,3
Sockets (1 phase / 3 phase) / cable K		2 / - / -	2 / 1 / -	2 / 1 / -	2 / 1 / -	- / - / K	- / - / K	- / - / K
<b>HYDRAULIC POWER REQUIREMENTS</b>								
Flow min.	<b>l / min (U.S. gpm)</b>	26 (6.86)	35 (9.24)	50 (13.2)	59 (15.58)	68 (17.95)	83 (21.91)	92 (24.3)
Pressure max.	<b>bar (psi)</b>	210 (3046)	210 (3046)	210 (3046)	210 (3046)	210 (3046)	210 (3046)	420 (6092)
<b>OVERALL DIMENSIONS</b>								
Length	<b>mm (in)</b>	469 (18.5)	475 (18.7)	509 (20)	510 (20.1)	554 (21.8)	800 (31.5)	1125 (44.3)
Width	<b>mm (in)</b>	379 (14.9)	379 (14.9)	379 (14.9)	379 (14.9)	334 (13.1)	334 (13.1)	397 (15.6)
Height	<b>mm (in)</b>	352 (13.9)	350 (13.8)	354 (13.9)	332 (13.1)	262 (10.3)	272 (10.7)	340 (13.4)
Weight	<b>kg (lbs)</b>	43,5 (96)	56,5 (125)	68 (150)	68 (150)	98 (216.1)	120 (265)	185 (408.5)
HG Hydraulic Generators are available up to 350 kVA. Models available with separate electric central and connection cable. Visit our website <a href="http://www.dynaset.com">www.dynaset.com</a> for detailed information.								



## HG - 60Hz, IP23

		HG 4.5 20	HG 6 29	HG 9 40	HG 12 58	HG 18 78	HG 25 110	HG 40 110
<b>OUTPUT CHARACTERISTICS</b>								
Output power max.	<b>kVA</b>	4,5	6	9	12	18	25	40
Power factor / power	<b>cos φ/kW</b>	1,0/4,5	1,0/6,0	0,8/7,2	0,8/9,6	0,8/14,4	0,8/20,0	0,8/32,0
Output Voltage, VAC	<b>1 phase</b>	120 (240)	120 (240)	240	240	240	240	240
	<b>3 phase</b>	-	-	415	415	415	415	415
Nominal Current, A	<b>1 phase</b>	37,5 (18,7)	50 (25)	18,75	25,0	37,5	52,1	83,3
	<b>3 phase</b>	-	-	12,5	16,7	25,0	34,8	55,6
Sockets (1 phase / 3 phase) / cable K)		2 / - / -	2 / - / -	2 / 1 / -	2 / 1 / -	2 / 1 / -	2 / 1 / -	- / - / K
<b>HYDRAULIC POWER REQUIREMENTS</b>								
Flow min.	<b>l / min (U.S. gpm)</b>	22 (5.81)	31 (8.18)	42 (11.09)	60 (16.63)	80 (21.12)	112 (29.57)	112 (29.57)
Pressure max.	<b>bar (psi)</b>	210 (3046)	210 (3046)	210 (3046)	210 (3046)	210 (3046)	210 (3046)	420 (6092)
<b>OVERALL DIMENSIONS</b>								
Length	<b>mm (in)</b>	453 (17.8)	455 (17.9)	578 (22.8)	555 (29.1)	820 (32.3)	870 (34.3)	989 (38.9)
Width	<b>mm (in)</b>	212 (8.3)	212 (8.3)	290 (11.4)	290 (11.4)	350 (13.8)	350 (13.8)	384 (15.1)
Height	<b>mm (in)</b>	227 (8.9)	227 (8.9)	368 (14.5)	351 (13.8)	461 (18.1)	461 (18.1)	478 (18.8)
Weight	<b>kg (lbs)</b>	29 (64)	29 (64)	104 (229)	60 (132)	98 (216)	120 (265)	198 (437)
HG Hydraulic Generators are available up to 350 kVA. Models available with separate electric central and connection cable. Visit our website <a href="http://www.dynaset.com">www.dynaset.com</a> for detailed information.								



## HG - VDC

		HG 1 12	HG 1 12	HG 2 24
<b>OUTPUT CHARACTERISTICS</b>				
Output Power max.	<b>kVA</b>	1,0	1,0	2,0
Output voltage	<b>VDC</b>	14	24	28
Nominal Current	<b>A</b>	70	40	70
Sockets (1 phase / 3 phase / cable K)		- / - / K	- / - / K	- / - / K
<b>HYDRAULIC POWER REQUIREMENTS</b>				
Flow min.	<b>l / min (U.S. gpm)</b>	14 (3.7)	14 (3.7)	26 (6.86)
Pressure max.	<b>bar (psi)</b>	210 (3046)	210 (3046)	210 (3046)
<b>OVERALL DIMENSIONS</b>				
Length	<b>mm (in)</b>	335 (13.2)	335 (13.2)	335 (13.2)
Width	<b>mm (in)</b>	190 (7.5)	190 (7.5)	190 (7.5)
Height	<b>mm (in)</b>	195 (7.7)	195 (7.7)	195 (7.7)
Weight	<b>kg (lbs)</b>	10 (22)	10 (22)	11 (24)
Visit our website <a href="http://www.dynaset.com">www.dynaset.com</a> for detailed information.				



# HGV POWER BOX

VARIABLE HYDRAULIC GENERATOR SYSTEM





## HGV POWER BOX

		HGV Power Box 3,5	HGV Power Box 6,5	HGV Power Box 10	HGV Power Box 15	HGV Power Box 20
<b>OUTPUT CHARACTERISTICS</b>						
Output Power max.	kVA	3,5	6,5	10	15	20
Power factor / power	cos φ/kW	1,0/3,5	0,8/5,8	0,8/8,0	0,8/9,6	0,8/16,0
Output Voltage, VAC	1 phase	230	230	230	230	230
	3 phase	-	400	400	400	400
Nominal Current	1 phase	15,2	14,2	21,7	32,6	43,5
	3 phase	-	9,4	14,4	21,7	28,9
Sockets (1 phase / 3 phase / cable K)		- / - / -	- / - / K	- / - / K	- / - / K	- / - / K
Pump speed	rpm	500 - 4000	750 - 4000	850 - 4000	700 - 3000	650 - 3000
<b>OVERALL DIMENSIONS</b>						
Box model		S	S	S	M	M
Length	mm (in)	884 (34.8)	884 (34.8)	884 (34.8)	960 (37.8)	960 (37.8)
Width	mm (in)	502 (19.8)	502 (19.8)	502 (19.8)	702 (27.6)	702 (27.6)
Height	mm (in)	490 (19.3)	490 (19.3)	490 (19.3)	478 (18.8)	478 (18.8)
System includes hydraulic generator, oil cooler, hydraulic pump with solenoid control. Visit our website <a href="http://www.dynaset.com">www.dynaset.com</a> for detailed information.						



# HGV

## VARIABLE HYDRAULIC GENERATOR SYSTEM



## HGV

		HGV Basic 3,5	HGV Basic 6,5	HGV Basic 10	HGV Basic 10	HGV Basic 12	HGV Basic 15	HGV Basic 20
<b>OUTPUT CHARACTERISTICS</b>								
Output Power	<b>kVA</b>	3,5	6,5	10	10	12	15	20
Power factor / power	<b>cos φ/kW</b>	1,0/3,5	0,8/5,8	0,8/8,0	0,8/8,0	0,8/9,6	0,8/12,0	0,8/16,0
Output Voltage, VAC	<b>1 phase</b>	230	230	230	230	230	230	230
	<b>3 phase</b>	-	400	400	400	400	400	400
Nominal Current, A	<b>1 phase</b>	15,2	14,2	21,7	21,7	32,6	32,6	43,5
	<b>3 phase</b>	-	9,4	14,4	14,4	17,3	21,7	28,9
Sockets (1 phase / 3 phase / cable K)		2 / - / -	2 / - / -	2 / 1 / -	2 / 1 / -	- / - / K	- / - / K	- / - / K
Pump speed	<b>rpm</b>	500 - 4000	750 - 4000	850 - 4000	700 - 3000	800 - 3000	700 - 3000	650 - 3000
<b>OVERALL GENERATOR DIMENSIONS</b>								
Length	<b>mm (in)</b>	428 (16.9)	504 (19.8)	559 (22)	559 (22)	557 (21.9)	819 (32.2)	870 (34.3)
Width	<b>mm (in)</b>	212 (8.3)	212 (8.3)	212 (8.3)	212 (8.3)	290 (11.4)	350 (13.8)	350 (13.8)
Height	<b>mm (in)</b>	227 (8.9)	325 (12.8)	314 (12.4)	314 (12.4)	349 (13.7)	462 (18.2)	462 (18.2)
Weight	<b>kg (lbs)</b>	26 (57)	43 (95)	57 (126)	57 (126)	60 (132)	98 (216)	120 (265)
System includes hydraulic generator, oil cooler, hydraulic pump with solenoid control. Visit our website <a href="http://www.dynaset.com">www.dynaset.com</a> for detailed information.								



# HWG

## HYDRAULIC WELDING GENERATOR









## HWG - PORTABLE

		HWG 200	HWG 200	HWG 250	HWG 250
<b>OUTPUT CHARACTERISTICS</b>					
Welding current	A	40-200	30-200	60-250	60-250
Welding electrode		Ø 2,5 - 4 mm	Ø 2,5 - 4 mm	Ø 2,5 - 4 mm	Ø 2,5 - 4 mm
ED%	%	60	60	60	60
Output voltage, VDC	1 phase	220	220	220	220
	3 phase	-	-	-	-
Output power	1 phase	2,0 kVA	2,0 kVA	2,0 kVA	2,0 kVA
	3 phase	-	-	-	-
<b>HYDRAULIC POWER REQUIREMENTS</b>					
Flow min.	l / min (U.S. gpm)	37 (9.77)	50 (13.2)	41 (10.82)	62 (16.37)
Pressure max.	bar (psi)	190 (2756)	140 (2031)	190 (2756)	140 (2031)
<b>OVERALL DIMENSIONS</b>					
Length	mm (in)	360 (14.2)	360 (14.2)	360 (14.2)	360 (14.2)
Width	mm (in)	205 (8.1)	205 (8.1)	205 (8.1)	205 (8.1)
Height	mm (in)	275 (10.8)	275 (10.8)	275 (10.8)	275 (10.8)
Weight	kg (lbs)	18 (40)	18 (40)	19 (42)	19 (42)
HWG 200 & 250 are also available for 110V models. Visit our website <a href="http://www.dynaset.com">www.dynaset.com</a> for detailed information.					





## HWG

		HWG 180	HWG 220	HWG 300	HWG 400
<b>OUTPUT CHARACTERISTICS</b>					
Welding current	<b>A</b>	40-180	30-220	40-300	30-400
Welding electrode		Ø 4 mm	Ø 5 mm	Ø 6 mm	Ø 7 mm
ED%	<b>%</b>	50	35	35	35
Output voltage, VAC	<b>1 phase</b>	230	230	230	230
	<b>3 phase</b>	400	400	400	400
Output power	<b>1 phase</b>	3,0 kVA	3,5 kVA	4,0 kVA	4,0 kVA
	<b>3 phase</b>	6,0 kVA	6,5 kVA	10,0 kVA	10,0 kVA
<b>HYDRAULIC POWER REQUIREMENTS</b>					
Flow min.	<b>l / min (U.S. gpm)</b>	35 (9.24)	50 (13.2)	70 (18.48)	84 (22.18)
Pressure max.	<b>bar (psi)</b>	210 (3046)	210 (3046)	210 (3046)	210 (3046)
<b>OVERALL DIMENSIONS</b>					
Length	<b>mm (in)</b>	560 (22)	562 (22.1)	625 (24.6)	790 (31.1)
Width	<b>mm (in)</b>	212 (8.3)	212 (8.3)	285 (11.2)	320 (12.6)
Height	<b>mm (in)</b>	370 (14.6)	370 (14.6)	435 (17.1)	545 (21.5)
Weight	<b>kg (lbs)</b>	51 (112)	52 (114)	92 (203)	132 (291)
Visit our website <a href="http://www.dynaset.com">www.dynaset.com</a> for detailed information.					



# HGG

## HYDRAULIC GROUND POWER GENERATOR



## HGG 200

OUTPUT CHARACTERISTICS		
Output Power max.	VDC	28,5
Nominal Current	A	40 - 200
HYDRAULIC POWER REQUIREMENTS		
Flow min.	l / min (U.S. gpm)	36 (9.5)
Pressure max.	bar (psi)	210 (3046)
OVERALL DIMENSIONS		
Length	mm (in)	340 (13.4)
Width	mm (in)	210 (8.2)
Height	mm (in)	620 (24.4)
Weight	kg (lbs)	52 (114.6)
110 V at 400 Hz is also an option. Visit our website <a href="http://www.dynaset.com">www.dynaset.com</a> for detailed information.		

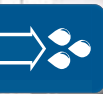


**HPW**

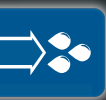
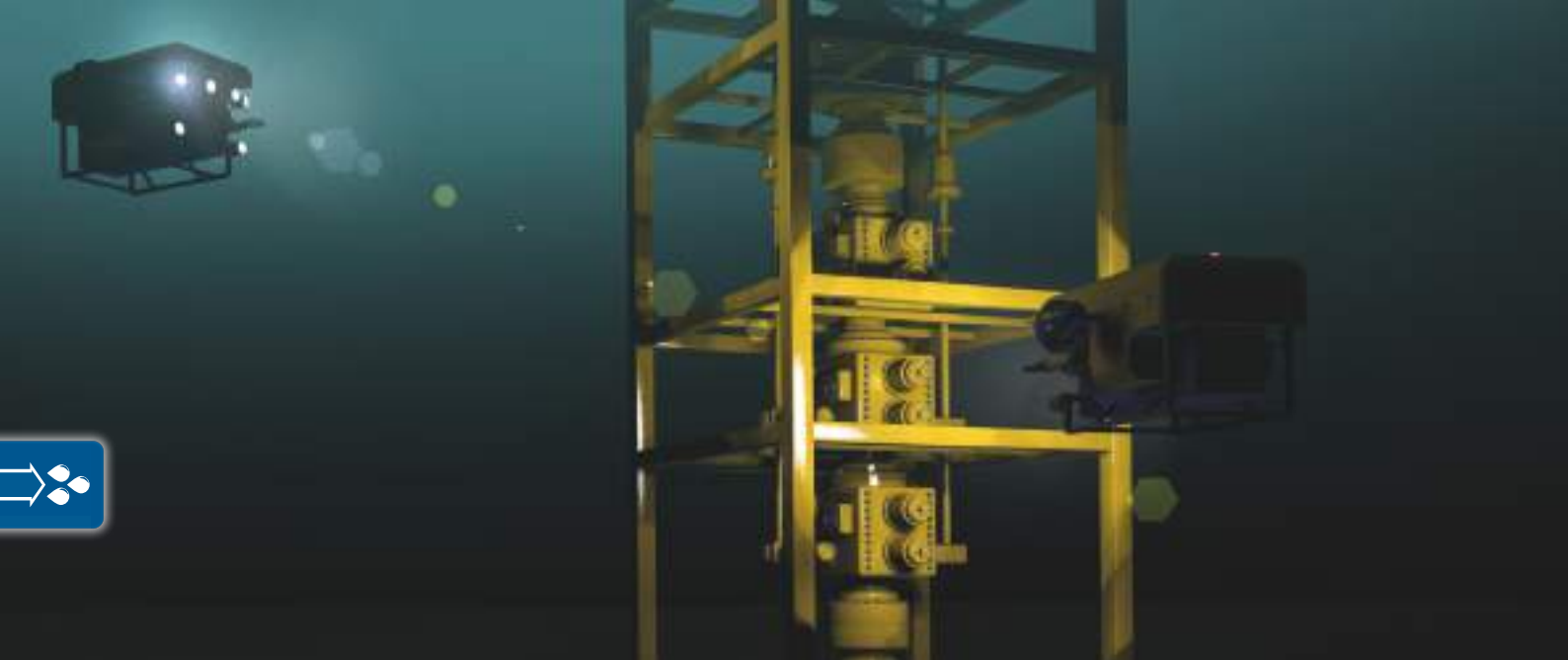
**HYDRAULIC POWER WASHER**

















## HPW

		HPW 200	HPW 420	HPW 220	HPW 90	HPW 520
<b>OUTPUT CHARACTERISTICS</b>						
Pumping fluid flow max.	<b>l / min (U.S. gpm)</b>	30 (7.92)	20 (5.28)	50 (13.21)	150 (39.62)	30 (7.92)
Pressure max.	<b>bar (psi)</b>	200 (2901)	420 (6092)	220 (3191)	90 (1305)	520 (7542)
Power max.	<b>kW</b>	10	14	18.5	22.5	26
<b>HYDRAULIC POWER REQUIREMENTS</b>						
Flow max.	<b>l / min (U.S. gpm)</b>	40 (10.6)	50 (13.21)	70 (18.49)	85 (22.45)	85 (22.45)
Pressure max.	<b>bar (psi)</b>	210 (3046)	220 (3191)	210 (3046)	210 (3046)	250 (3626)
<b>OVERALL DIMENSIONS</b>						
Length	<b>mm (in)</b>	160 (6.3)	160 (6.3)	170 (6.7)	175 (6.9)	140 (5.5)
Width	<b>mm (in)</b>	245 (9.6)	245 (9.6)	280 (11.0)	345 (13.6)	290 (11.4)
Height	<b>mm (in)</b>	165 (6.5)	155 (6.1)	185 (7.2)	250 (9.8)	175 (6.9)
Weight	<b>kg (lbs)</b>	8 (17.6)	16 (35.2)	18 (39.6)	31 (68.3)	22 (48.5)
Visit our website <a href="http://www.dynaset.com">www.dynaset.com</a> for detailed information.						



## HPW

		HPW 180	HPW 460	HPW 130	HPW 800	HPW 1600
<b>OUTPUT CHARACTERISTICS</b>						
Pumping fluid flow max.	<b>l / min (U.S. gpm)</b>	90 (23.78)	50 (13.21)	180 (47.52)	30 (7.92)	15 (3.96)
Pressure max.	<b>bar (psi)</b>	180 (2611)	460 (6672)	130 (1885)	800 (11603)	1600 (23206)
Power max.	<b>kW</b>	27	38	39	40	40
<b>HYDRAULIC POWER REQUIREMENTS</b>						
Flow max.	<b>l / min (U.S. gpm)</b>	115 (30.37)	115 (30.37)	140 (36.96)	140 (36.96)	140 (36.96)
Pressure max.	<b>bar (psi)</b>	210 (3046)	250 (3626)	250 (3626)	210 (3046)	230 (3336)
<b>OVERALL DIMENSIONS</b>						
Length	<b>mm (in)</b>	240 (9.4)	195 (7.7)	175 (6.9)	195 (7.6)	195 (7.6)
Width	<b>mm (in)</b>	330 (13.0)	314 (12.2)	400 (15.7)	340 (13.3)	405 (15.9)
Height	<b>mm (in)</b>	175 (6.9)	197 (7.8)	270 (10.6)	195 (7.6)	160 (6.3)
Weight	<b>kg (lbs)</b>	28 (61.7)	26 (57.3)	35 (77.2)	39 (85.9)	36 (79.3)
Visit our website <a href="http://www.dynaset.com">www.dynaset.com</a> for detailed information.						



## HPW

		HPW 1000	HPW 300	HPW 1200	HPW MOBI 200	HPW MOBI 220	HPW FOX 200
<b>OUTPUT CHARACTERISTICS</b>							
Pumping fluid flow max.	<b>l / min (U.S. gpm)</b>	30 (7.92)	300 (79.25)	100 (26.41)	30 (7.92)	50 (13.21)	30 (7.92)
Pressure max.	<b>bar (psi)</b>	1000 (14504)	300 (4351)	1200 (17405)	200 (2901)	220 (3191)	200 (2901)
Power max.	<b>kW</b>	50	150	200	10	18.5	10
<b>HYDRAULIC POWER REQUIREMENTS</b>							
Flow max.	<b>l / min (U.S. gpm)</b>	140 (36.96)	350 (92.46)	440 (116.16)	45 (11.88)	70 (18.48)	45 (11.88)
Pressure max.	<b>bar (psi)</b>	280 (4061)	350 (5076)	350 (5075)	200 (2901)	210 (3046)	200 (2901)
<b>OVERALL DIMENSIONS</b>							
Length	<b>mm (in)</b>	168 (6.6)	270 (10.6)	265 (10.4)	350 (13.8)	350 (13.8)	350 (13.8)
Width	<b>mm (in)</b>	379 (15.6)	745 (29.3)	915 (36)	400 (15.7)	400 (15.7)	400 (15.7)
Height	<b>mm (in)</b>	194 (7.6)	360 (14.2)	350 (13.8)	1100 (43.3)	1100 (43.3)	1100 (43.3)
Weight	<b>kg (lbs)</b>	39 (85.9)	170 (374.7)	177 (390.2)	21 (46.3)	31 (68.3)	21 (46.3)
Visit our website <a href="http://www.dynaset.com">www.dynaset.com</a> for detailed information.							



**KPL**

**HIGH PRESSURE STREET WASHING UNIT**











## KPL

		KPL S 200 - 1250X8	KPL M 200 - 1650X9	KPL L 200 - 1650X9	KPL L 220 - 1850X9	KPL XL 220 - 2200X10	KPL XL 180 - 2200X10
<b>OUTPUT CHARACTERISTICS</b>							
Washing pressure max.	bar (psi)	200 (2901)	200 (2901)	200 (2901)	220 (3191)	220 (3191)	180 (2611)
Output max.	l / min (U.S. gpm)	30 (7.92)	30 (7.92)	30 (7.92)	50 (13.21)	50 (13.21)	90 (23.76)
Cleaning width	m (ft)	1,5 (4.9)	1,8 (5.9)	1,8 (5.9)	2 (6.6)	2,5 (8.2)	2,5 (8.2)
Water tank volume	l (U.S. gal)	270 (71.28)	540 (142.56)	810 (213.89)	810 (213.89)	1060 (279.84)	1060 (279.84)
Turning device control	(M)manual/ (H)hydraulic/ (E) electric/	M	H / E	H / E	H / E	H / E	H / E
<b>HYDRAULIC POWER REQUIREMENTS</b>							
Flow max.	l / min (U.S. gpm)	40 (10.6)	40 (10.6)	40 (10.6)	70 (18.48)	70 (18.48)	115 (30.36)
Pressure max.	bar (psi)	210 (3046)	210 (3046)	210 (3046)	210 (3046)	210 (3046)	210 (3046)
<b>OVERALL DIMENSIONS</b>							
Length	mm (in)	960 (37.8)	1655 (65.2)	1655 (65.2)	1655 (65.2)	1655 (65.2)	1655 (65.2)
Water tank width	mm (in)	1042 (41)	960 (37.8)	1438 (17.2)	1438 (17.2)	1916 (75.4)	1916 (75.4)
Spray unit width	mm (in)	1250 (5.9)	1650 (6.2)	1650 (6.2)	1850 (72.8)	2200 (86.6)	2200 (86.6)
Height	mm (in)	1143 (45)	1100 (43.3)	1100 (43.3)	1100 (43.3)	1100 (43.3)	1100 (43.3)
Visit our website <a href="http://www.dynaset.com">www.dynaset.com</a> for detailed information.							



## KPL - WITHOUT WATER TANK

		KPL 200 1650X9	KPL 220 1850X9	KPL 180 2200X10	KPL TRUCK 90 2200X11	KPL TRUCK 180 2200X10
<b>OUTPUT CHARACTERISTICS</b>						
Washing pressure max.	<b>bar (psi)</b>	200 (2901)	220 (3191)	180 (2611)	90 (1305)	180 (2611)
Output max.	<b>l / min (U.S. gpm)</b>	30 (7.92)	50 (13.21)	90 (23.76)	150 (39.6)	90 (23.76)
Cleaning width	<b>m (ft)</b>	1,8 (5.9)	2 (6.6)	2,5 (8.2)	2,5 (8.2)	2,5 (8.2)
Turning device control	<b>(M)manual/ (H)hydraulic/ (E) electric/</b>	M	H / E	H / E	H / E	H / E
Hydraulic lifting device		-	-	-	yes	yes
<b>HYDRAULIC POWER REQUIREMENTS</b>						
Flow max.	<b>l / min (U.S. gpm)</b>	40 (10.6)	70 (18.48)	115 (30.36)	85 (22.44)	115 (30.36)
Pressure max.	<b>bar (psi)</b>	210 (3046)	210 (3046)	210 (3046)	210 (3046)	210 (3046)
Visit our website <a href="http://www.dynaset.com">www.dynaset.com</a> for detailed information.						



# HPW-DUST

## HIGH PRESSURE DUST SUPPRESSION SYSTEM







## HPW-DUST

		HPW DUST 200	HPW DUST 200 DOUBLE DUST	HPW DUST 220 DOUBLE DUST	HPW DUST 180 DOUBLE DUST	HPW DUST 130 DOUBLE DUST
<b>OUTPUT CHARACTERISTICS</b>						
Output flow max.	l / min (U.S. gpm)	30 (7.9)	30 (7.9)	50 (13.2)	90 (23.75)	180 (47.5)
Pressure max.	bar (psi)	140 (2031)	140 (2031)	130 (1885)	140 (2031)	140 (2031)
Nozzle	pcs	4	2	4	4	4
High power nozzle	pcs	-	2	2	2	2
<b>HYDRAULIC POWER REQUIREMENTS</b>						
Flow max.	l / min (U.S. gpm)	40 (10.6)	40 (10.6)	70 (18.49)	115 (30.36)	140 (36.96)
Pressure max.	bar (psi)	160 (2321)	160 (2321)	160 (2321)	160 (2321)	160 (2321)
<b>OVERALL PUMP DIMENSIONS</b>						
Length	mm (in)	160 (6.3)	160 (6.3)	170 (6.7)	240 (9.4)	175 (6.9)
Width	mm (in)	245 (9.6)	245 (9.6)	280 (11.0)	330 (13.0)	400 (15.7)
Height	mm (in)	165 (6.5)	165 (6.5)	185 (7.2)	175 (6.9)	270 (10.6)
Weight	kg (lbs)	8 (17.6)	8 (17.6)	18 (39.6)	28 (61.7)	35 (77.2)
<b>DESCRIPTION</b>						
Application	Mobile crushers, crushing plants, mobile screeners, breakers, drilling rigs, loaders, dumpers, demolition machinery, etc.					
Standard supply includes HPW pump, hydraulic priority control valve, high pressure dust suppression nozzles, washing pistol with 10m pressure hose. Number of nozzles can be increased. Visit our website <a href="http://www.dynaset.com">www.dynaset.com</a> for detailed information.						











## PPL

		PPL 200	PPL 220	PPL 180	PPL 460
<b>OUTPUT CHARACTERISTICS</b>					
Washing pressure max.	<b>bar (psi)</b>	200 (2901)	220 (3191)	180 (2611)	460 (6672)
Output max.	<b>l / min (U.S. gpm)</b>	30 (7.92)	50 (13.2)	90 (23.76)	50 (13.2)
Recommended hose Ø	<b>in</b>	3/8	1/2	3/4	1/2
Recommended hose length	<b>m (ft)</b>	50 (13.2)	50 (13.2)	50 (13.2)	100 (26.4)
Turning device control	<b>(M)manual/ (E12) electric 12V/ (E24) electric 24V</b>	M/E12/E24	M/E12/E24	M/E12/E24	M/E12/E24
<b>HYDRAULIC POWER REQUIREMENTS</b>					
Flow max.	<b>l / min (U.S. gpm)</b>	40 (10.6)	70 (18.48)	115 (30.36)	115 (30.36)
Pressure max.	<b>bar (psi)</b>	210 (3046)	210 (3046)	210 (3046)	250 (3626)
<b>OVERALL DIMENSIONS</b>					
Length	<b>mm (in)</b>	650 (25.6)	650 (25.6)	650 (25.6)	650 (25.6)
Width	<b>mm (in)</b>	360 (14.2)	360 (14.2)	450 (17.7)	660 (26.0)
Height	<b>mm (in)</b>	650 (25.6)	650 (25.6)	920 (36.2)	920 (36.2)
Weight	<b>kg (lbs)</b>	69 (152.1)	72 (158.7)	73 (160.9)	85 (187.4)
Visit our website <a href="http://www.dynaset.com">www.dynaset.com</a> for detailed information.					



# HPW-FIRE

## HIGH PRESSURE FIREFIGHTING SYSTEM







## HPW-FIRE

HIGH PRESSURE FIREFIGHTING SYSTEMS	
HPW 200 firefighting pistol kit	Pistol handle 200 bar (2901 psi), 30 l/min (7.9 U.S. gpm) with quick coupler piercing / fog / foam nozzle.
HPW 220 firefighting pistol kit	Pistol handle 220 bar (2901 psi), 50 l/min (13.2 U.S. gpm) with quick coupler piercing / fog / foam nozzle.
HPW 130 firefighting pistol kit	Pistol handle 130 bar (1885 psi), 180 l/min (47.5 U.S. gpm) with quick coupler piercing / fog / foam nozzle.
HPW 180 firefighting pistol kit	Pistol handle 180 bar (2610 psi), 90 l/min (23.8 U.S. gpm) with quick coupler piercing / fog / foam nozzle.
HPP 800-42	Hydraulic low pressure fire pump, max. 800 l/min (211.2 U.S. gpm), 8 bar (116 psi). Hydraulic flow requirement 42 l/min (11.09 U.S. gpm).
HPP 1200-70	Hydraulic low pressure fire pump, max. 1200 l/min (316.8 U.S. gpm), 42 bar (609 psi). Hydraulic flow requirement 70 l/min ( 18.48 U.S. gpm).
HPP 16D/23-125	Hydraulic low pressure fire pump, max. 1900 l/min (501.6 U.S. gpm), 7 bar (102 psi). Hydraulic flow requirement 125 l/min (33 U.S. gpm).
HRU 800 /2x5-45	Closed circuit hydraulic-to-hydraulic power unit. Delivers 800 bar (11600 psi), 2x5 l/min (1.32 U.S. gpm) of hydraulic power for rescue tools.
HPI 700/30-75	Hydraulic-to-hydraulic power unit. HPI delivers 1x700 bar (10200 psi), 30 l/min (7.92 U.S. gpm) of hydraulic power for rescue tools.
Foam injector	Adjustable foam content 0 - 6%.

Visit our website [www.dynaset.com](http://www.dynaset.com) for detailed information.



FP

FIREFIGHTING PIERCING KIT





## FP

FIREFIGHTING PIERCING KIT	
FP200/30-40	Firefighting piercing kit, 200 bar (2901 psi), 30 l/min (7.92 U.S. gpm)
FP220/50-40	Firefighting piercing kit, 220 bar (3190 psi), 50 l/min (13.2 U.S. gpm)
FP180/90-40	Firefighting piercing kit, 180 bar (2610 psi), 90 l/min (23.76 U.S. gpm)
FP130/180-40	Firefighting piercing kit, 130 bar (1885 psi), 180 l/min (47.52 U.S. gpm)

The FP kit includes a HPW pump, piercing tool and control unit. Visit our website [www.dynaset.com](http://www.dynaset.com) for detailed information.



# HDF

## HYDRAULIC DRILLING FLUID PUMP







## HDF

		HDF 40 /40-8	HDF 180 /25-35	HDF 200 /40-55	HDF 160 /70-90	HDF 90 /150-85	HDF 200 /250-280
<b>OUTPUT CHARACTERISTICS</b>							
Drilling fluid flow max.	<b>l / min (U.S. gpm)</b>	40 (10.57)	23 (6.07)	40 (10.57)	70 (18.48)	150 (39.6)	250 (66.04)
Pressure max.	<b>bar (psi)</b>	40 (580)	180 (2611)	200 (2901)	160 (2321)	90 (1305)	200 (2901)
Power max.	<b>kW</b>	2.6	7	13	19	23	85
<b>HYDRAULIC POWER REQUIREMENTS</b>							
Flow max.	<b>l / min (U.S. gpm)</b>	8 (2.11)	35 (9.25)	55 (14.53)	90 (23.78)	85 (22.45)	280 (73.97)
Pressure max.	<b>bar (psi)</b>	210 (3046)	210 (3046)	210 (3046)	210 (3046)	210 (3046)	210 (3046)
<b>OVERALL DIMENSIONS</b>							
Length	<b>mm (in)</b>	190 (7.5)	160 (6.3)	170 (6.7)	220 (8.7)	175 (6.9)	270 (10.6)
Width	<b>mm (in)</b>	315 (12.4)	245 (9.6)	280 (11.0)	330 (13.0)	365 (14.3)	745 (29.3)
Height	<b>mm (in)</b>	170 (6.7)	170 (6.7)	185 (7.3)	180 (7.1)	250 (9.8)	340 (14.2)
Weight	<b>kg (lbs)</b>	8 (17.6)	8 (17.6)	15 (33.1)	27 (59.5)	30 (66.1)	170 (374.8)
Visit our website <a href="http://www.dynaset.com">www.dynaset.com</a> for detailed information.							



JPL

HIGH PRESSURE BIN WASHING SYSTEM



	JPL 200	JPL 200 (with WHU)	JPL 2000 (robot)
<b>SYSTEM CHARACTERISTICS</b>			
Operation	Manual	Manual	Automatic
Pump type	HPW 200/30-45	HPW 200/30-45	HPW 180/90-115
<b>OUTPUT CHARACTERISTICS</b>			
Water pressure max. <b>bar (psi)</b>	200 (2901)	200 (2901)	180 (2611)
Water flow max. <b>l / min (U.S. gpm)</b>	30 (7.92)	30 (7.92)	90 (23.76)
<b>HYDRAULIC POWER REQUIREMENTS</b>			
Flow max. <b>l / min (U.S. gpm)</b>	45 (11.88)	45 (11.88)	115 (30.36)
Pressure max. <b>bar (psi)</b>	200 (2901)	200 (2901)	210 (3046)
<p>JPL 200 standard supply: HPW pump, nozzles, washing pistol and 20 m hose reel. WHU = Water heating unit.            Visit our website <a href="http://www.dynaset.com">www.dynaset.com</a> for detailed information.</p>			



# HSP

## HYDRAULIC SUBMERSIBLE PUMP





## HSP

		HSP 600	HSP 1500	HSP 2600	HSP 4000	HSP 7000	HSP 10000	HSP 16000
<b>OUTPUT CHARACTERISTICS</b>								
Output max.	<b>l / min (U.S. gpm)</b>	800 (211.2)	2000(528.3)	3000(792.5)	5000 (1320)	8000 (2113)	12000(3170)	20000(5283)
Head max.	<b>m (ft.)</b>	30 (98.4)	25 (82)	35 (114.8)	30 (98.4)	35 (114.8)	35 (114.8)	35 (114.8)
Discharge at standard head of 5m	<b>l / min (U.S. gpm)</b>	600 (158.5)	1500 (296.3)	2600 (686.8)	4000 (1057)	7000 (1849)	10000 (2642)	16000 (4227)
Hose Ø	<b>in</b>	2	3	3	5	5	6	6
<b>HYDRAULIC POWER REQUIREMENTS</b>								
Flow max.	<b>l / min (U.S. gpm)</b>	38 (10.03)	40 (10.56)	50 (13.20)	100 (26.42)	169 (44.62)	200 (52.83)	317 (83.69)
Pressure max.	<b>bar (psi)</b>	260 (3771)	180 (2611)	250 (3626)	250 (3626)	350 (5076)	350 (5076)	350 (5076)
<b>OVERALL DIMENSIONS</b>								
Width	<b>mm (in)</b>	140 (5.5)	350 (13.8)	350 (13.8)	450 (17.7)	450 (17.7)	500 (19.7)	650 (25.6)
Height	<b>mm (in)</b>	510 (20.1)	700 (27.6)	700 (27.6)	900 (35.4)	900 (35.4)	1100 (43.3)	1250 (49.2)
Weight	<b>kg (lbs)</b>	7 (15.4)	15 (33.1)	20 (44.1)	45 (99.2)	54 (119)	70 (154.3)	85 (187.4)
Visit our website <a href="http://www.dynaset.com">www.dynaset.com</a> for detailed information.								



# HK / HKR / HKL

## HYDRAULIC COMPRESSORS









## HK

		HK 450	HK 1000
<b>OUTPUT CHARACTERISTICS</b>			
Compressed air (ISO 1217) max.	<b>l / min (U.S. gpm)</b>	450 (118.9)	1000 (264)
Pressure max.	<b>bar (psi)</b>	8 (116)	12 (174)
<b>HYDRAULIC POWER REQUIREMENTS</b>			
Flow at max. output	<b>l / min (U.S. gpm)</b>	15 (3.96)	35 (9.25)
Pressure max.	<b>bar (psi)</b>	210 (3046)	230 (3337)
<b>OVERALL DIMENSIONS</b>			
Length	<b>mm (in)</b>	530 (20.9)	725 (28.5)
Width	<b>mm (in)</b>	430 (16.9)	490 (19.3)
Height	<b>mm (in)</b>	460 (18.1)	600 (23.6)
Weight	<b>kg (lbs)</b>	35 (77.2)	80 (176.4)
Visit our website <a href="http://www.dynaset.com">www.dynaset.com</a> for detailed information.			



		HKR 1300	HKR 2000	HKR 2500	HKR 4000	HKR 5000	HKR 7500
<b>OUTPUT CHARACTERISTICS</b>							
Compressed air (ISO 1217) max.	<b>l / min (U.S. gpm)</b>	1300 (343.42)	2000 (528.34)	2500 (660.43)	4000 (1056.8)	5000 (1320.9)	7500 (1981.3)
Pressure max.	<b>bar (psi)</b>	10 (145)	10 (145)	10 (145)	10 (145)	10 (145)	10 (145)
<b>HYDRAULIC POWER REQUIREMENTS</b>							
Flow at max. output	<b>l / min (U.S. gpm)</b>	37 (9.77)	53 (14.00)	67 (17.70)	104 (27.47)	137 (36.19)	183 (48.34)
Pressure max.	<b>bar (psi)</b>	230 (3336)	230 (3336)	230 (3336)	230 (3336)	230 (3336)	270 (3916)
<b>OVERALL DIMENSIONS</b>							
Length	<b>mm (in)</b>	490 (19.3)	490 (19.3)	490 (19.3)	650 (25.6)	670 (26.4)	779 (30.7)
Width	<b>mm (in)</b>	455 (17.9)	455 (17.9)	455 (17.9)	520 (20.5)	520 (20.5)	622 (24.5)
Height	<b>mm (in)</b>	425 (16.7)	425 (16.7)	425 (16.7)	720 (28.3)	720 (28.3)	809 (31.9)
Weight	<b>kg (lbs)</b>	74 (163.1)	74 (163.1)	74 (163.1)	137 (302)	137 (302)	270 (595.2)
Visit our website <a href="http://www.dynaset.com">www.dynaset.com</a> for detailed information.							



## HKL

		HKL 400	HKL 801	HKL 1300	HKL 1300 *	HKL 1800
<b>OUTPUT CHARACTERISTICS</b>						
Compressed air (ISO 1217) max.	<b>l / min (U.S. gpm)</b>	400 (105.6)	800 (211.2)	1300 (343.2)	1300 (343.2)	1800 (475.2)
Pressure max.	<b>bar (psi)</b>	8 (116)	8 (116)	8 (116)	8 (116)	8 (116)
<b>HYDRAULIC POWER REQUIREMENTS</b>						
Flow at max. output	<b>l / min (U.S. gpm)</b>	24 (6.33)	26 (6.86)	38 (10.03)	46 (12.14)	46 (12.14)
Pressure max.	<b>bar (psi)</b>	250 (3626)	250 (3626)	250 (3626)	250 (3626)	250 (3626)
<b>OVERALL DIMENSIONS</b>						
Length	<b>mm (in)</b>	525 (20.7)	640 (25.2)	640 (25.2)	640 (25.2)	810 (31.9)
Width	<b>mm (in)</b>	250 (9.8)	320 (12.6)	320 (12.6)	320 (12.6)	390 (15.4)
Height	<b>mm (in)</b>	325 (12.8)	520 (20.5)	520 (20.5)	520 (20.5)	620 (24.4)
Weight	<b>kg (lbs)</b>	30 (66.1)	55 (121.3)	55 (121.3)	55 (121.3)	103 (227.1)
* Low pressure model (nominal hydraulic input pressure 170 bar.) HKL models available up to 13 bar. Visit our website <a href="http://www.dynaset.com">www.dynaset.com</a> for detailed information.						



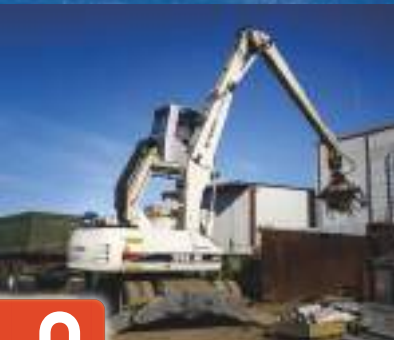


		HKL 2600	HKL 2600 *	HKL 4100	HKL 5000	HKL 7500
<b>OUTPUT CHARACTERISTICS</b>						
Compressed air (ISO 1217) max.	<b>l / min (U.S. gpm)</b>	2600 (686.4)	2600 (686.4)	4100 (1082.6)	5000 (1320.9)	7500 (1981.3)
Pressure max.	<b>bar (psi)</b>	8 (116)	8 (116)	8 (116)	8 (116)	8 (116)
<b>HYDRAULIC POWER REQUIREMENTS</b>						
Flow at max. output	<b>l / min (U.S. gpm)</b>	65 (17.16)	82 (21.65)	113 (29.83)	135 (35.64)	150 (39.60)
Pressure max.	<b>bar (psi)</b>	250 (3626)	250 (3626)	250 (3626)	250 (3626)	250 (3626)
<b>OVERALL DIMENSIONS</b>						
Length	<b>mm (in)</b>	810 (31.9)	810 (31.9)	890 (35)	890 (35)	1100 (43.3)
Width	<b>mm (in)</b>	390 (15.4)	390 (15.4)	515 (20.3)	515 (20.3)	890 (35)
Height	<b>mm (in)</b>	620 (24.4)	620 (24.4)	790 (31.1)	790 (31.1)	900 (34.4)
Weight	<b>kg (lbs)</b>	103 (227.1)	103 (227.1)	185 (407.9)	185 (407.9)	330 (727.6)
* Low pressure model (nominal hydraulic input pressure 170 bar.)						
HKL models available up to 13 bar. Visit our website <a href="http://www.dynaset.com">www.dynaset.com</a> for detailed information.						



# HMG PRO

## HYDRAULIC MAGNET GENERATOR



## HMG PRO

		HMG PRO 3	HMG PRO 6	HMG PRO 10	HMG PRO 12	HMG PRO 15	HMG PRO 20	HMG PRO 30	HMG PRO 40
<b>OUTPUT CHARACTERISTICS</b>									
Output power	<b>kW</b>	3	6	10	12	15	20	30	40
Magnet coil power	<b>kW</b>	3	5,5	9,5	11,5	14,5	19,5	29,5	39,5
Operating voltage	<b>VDC</b>	220							
Control		Electric (6 - 32V) / Hydraulic							
Auxiliary power output		Optional							
<b>HYDRAULIC POWER REQUIREMENTS</b>									
Flow min.	<b>l / min (U.S. gpm)</b>	17 (4.49)	35 (9.24)	50 (13.2)	59 (15.58)	68 (17.95)	94 (24.82)	122(32.21)	167(44.09)
Pressure max.	<b>bar (psi)</b>	210 (3046)	210 (3046)	210 (3046)	210 (3046)	210 (3046)	210 (3046)	250 (3626)	250 (3626)
<b>OVERALL DIMENSIONS</b>									
Length	<b>mm (in)</b>	402 (15.8)	520 (20.5)	575 (22.6)	570 (22.4)	820 (32.3)	875 (34.4)	993 (39.1)	1003(39.5)
Width	<b>mm (in)</b>	340 (13.4)	326 (12.8)	325 (12.8)	460 (18.1)	512 (20.2)	512 (20.2)	515 (20.3)	600 (23.6)
Height	<b>mm (in)</b>	317 (12.5)	350 (13.8)	350 (13.8)	370 (14.6)	415 (16.3)	415 (16.3)	450 (17.7)	600 (23.6)
Weight	<b>kg (lbs)</b>	43 (95)	43 (95)	68 (150)	100 (220)	145 (320)	163 (359)	175 (386)	198 (437)
Also available CMG PRO hydraulic magnet generator for hydraulic control only. Visit our website <a href="http://www.dynaset.com">www.dynaset.com</a> for detailed information.									



# MAG

## LIFTING MAGNET



## MAG

		MAG 700	MAG 900	MAG 1000	MAG 1200	MAG 1400
<b>OUTPUT CHARACTERISTICS</b>						
Magnet coil power	<b>kW</b>	3	4,9	5,5	9,0	10
Operating voltage	<b>VDC</b>	220				
<b>NOMINAL LIFTING CAPACITY</b>						
Tear-off w/ air gap Ø/300	<b>kg (lbs)</b>	5500 (12125)	10500 (23149)	16000 (35274)	15000 (33069)	18000 (39683)
Slabs, blocks	<b>kg (lbs)</b>	2750 (6063)	5250 (11574)	8000 (17637)	7500 (16535)	9000 (19842)
Cast iron pigs	<b>kg (lbs)</b>	105 (231)	230 (507)	350 (772)	410 (904)	580 (1279)
Scrap	<b>grade 3A, kg (lbs)</b>	80 (176)	200 (441)	320 (705)	370 (816)	530 (1168)
	<b>grade 24,kg (lbs)</b>	70 (154)	190 (419)	290 (639)	360 (794)	510 (1124)
	<b>grade 40, kg (lbs)</b>	40 (88)	100 (220)	150 (331)	190 (419)	240 (529)
<b>OVERALL DIMENSIONS</b>						
Diameter Ø	<b>mm (in)</b>	700 (27.6)	960 (37.8)	1070 (42.1)	1250 (49.2)	1450 (57.1)
Weight	<b>kg (lbs)</b>	275 (606)	650 (1433)	870 (1918)	1100 (2425)	2550 (5621)
Standard MAG includes chains. Quick coupler attachments and quick coupling connectors are also available. More models and options available by request; rectangle form, claws, underwater. Visit our website <a href="http://www.dynaset.com">www.dynaset.com</a> for detailed information.						



# HMAG PRO

HYDRAULIC MAGNET



## HMAG PRO

		HMAG PRO 700-18	HMAG PRO 900-33	HMAG PRO 1200-48	HMAG PRO 1400-57
<b>OUTPUT CHARACTERISTICS</b>					
Magnet coil power max.	<b>kW</b>	3	5,5	9,5	11,5
Operating voltage	<b>VDC</b>	220			
<b>NOMINAL LIFTING CAPACITY</b>					
Tear-off w/ air gap Ø/300	<b>kg (lbs)</b>	5500 (12125)	10500 (23149)	15000 (33069)	18000 (39683)
Slabs, blocks	<b>kg (lbs)</b>	2750 (6063)	5250 (11574)	7500 (16535)	9000 (19842)
Cast iron pigs	<b>kg (lbs)</b>	105 (231)	230 (507)	410 (904)	580 (1279)
Scrap	<b>grade 3A, kg (lbs)</b>	80 (176)	200 (441)	370 (816)	530 (1168)
	<b>grade 24,kg (lbs)</b>	70 (154)	190 (419)	360 (794)	510 (1124)
	<b>grade 40, kg (lbs)</b>	40 (88)	100 (220)	190 (419)	240 (529)
<b>HYDRAULIC POWER REQUIREMENTS</b>					
Flow min.	<b>l / min (U.S. gpm)</b>	19 (5.02)	35 (9.24)	52 (13.73)	61 (16.1)
Pressure max.	<b>bar (psi)</b>	350 (5076)	350 (5076)	350 (5076)	350 (5076)
<b>OVERALL DIMENSIONS</b>					
Diameter Ø	<b>mm (in)</b>	720 (28.8)	950 (38)	1250 (50)	1450 (58)
Weight (with chains)	<b>kg (lbs)</b>	440 (968)	900 (1980)	1550 (3410)	1700 (3740)
Standard HMAG includes chains. Quick coupler attachments and quick coupling connectors are also available. More models and options available by request e.g. HMAG with claws. Visit our website <a href="http://www.dynaset.com">www.dynaset.com</a> for detailed information.					



# HVB / HVD / HRC

HYDRAULIC VIBRAS









## HVB / HVD / HRC

		HVB 350 9-40	HVB 350 18-60	HVB 350 27-80	HVD 55 30-24	HVD 90 28-100	HRC 55 30-80
<b>OUTPUT CHARACTERISTICS</b>							
Vibration force max.	<b>kN</b>	-	-	-	18	40	16
Frequency	<b>Hz</b>	30	23	19	55	35	5
<b>HYDRAULIC POWER REQUIREMENTS</b>							
Flow min.	<b>l / min (U.S.gpm)</b>	40 (10.56)	60 (15.84)	80 (21.12)	24 (6.34)	100	36 (9.5)
Pressure max.	<b>bar (psi)</b>	350 (5076)	350 (5076)	350 (5076)	210 (3046)	210 (3046)	210 (3046)
<b>OVERALL DIMENSIONS</b>							
Length	<b>mm (in)</b>	110 (4.3)	110 (4.3)	110 (4.3)	225 (8.9)	273 (10.7)	420
Width	<b>mm (in)</b>	155 (6.1)	155 (6.1)	155 (6.1)	115 (4.5)	135 (5.3)	70
Height	<b>mm (in)</b>	130 (5.1)	130 (5.1)	130 (5.1)	80 (3.1)	185 (7.3)	120
Weight	<b>kg (lbs)</b>	13 (29)	13 (29)	13 (29)	13 (29)	40 (88)	9 (20)
Base machine size	<b>t (U.S. t)</b>	0 - 5 (0 - 11)	4-10 (8.8 - 22)	7 - 20 (15.4 - 44)	-	-	-
<b>DESCRIPTION</b>							
		Hydraulic vibration pump. For excavators, loaders, dumpers and other earth moving machines.			Hydraulic directional vibra. For excavators, loaders, dumpers and street sweeping machines.		Hydraulic reversal cylinder. Cylinder with fast linear oscillating movement.
Other models available by request. Visit our website <a href="http://www.dynaset.com">www.dynaset.com</a> for detailed information.							



# POWER BOOSTING

HYDRAULIC PRESSURE INTENSIFIERS



## POWER BOOSTERS

		HPI 700 10 - 20	HPI 700 30 - 75	HPIC 700 30 - 100	HPIC 700 30 - 200	HPIC 700 30 - 300
<b>OUTPUT CHARACTERISTICS</b>						
Hydraulic flow	l / min (U.S. gpm)	10 (2.64)	30 (7.92)	30 (7.92)	30 (7.92)	30 (7.92)
Pressure max.	bar (psi)	700 (10153)	700 (10153)	700 (10153)	700 (10153)	700 (10153)
<b>HYDRAULIC POWER REQUIREMENTS</b>						
Flow	l / min (U.S. gpm)	20 (5.28)	75 (19.8)	100 (26.4)	200 (52.8)	300 (79.2)
Pressure max.	bar (psi)	330 (4786)	350 (5076)	350 (5076)	350 (5076)	350 (5076)
<b>OVERALL DIMENSIONS</b>						
Length	mm (in)	204 (8)	245 (9.6)	245 (9.6)	245 (9.6)	245 (9.6)
Width	mm (in)	111 (4.4)	115 (4.5)	115 (4.5)	120 (4.7)	120 (4.7)
Height	mm (in)	73 (2.9)	130 (5.1)	160 (6.3)	190 (7.5)	190 (7.5)
Weight	kg (lbs)	5 (11)	14 (31)	20 (44)	27 (60)	27 (60)
<b>DESCRIPTION</b>						
		Hydraulic pressure intensifiers for powering tools and pressure testing.		Hydraulic pressure intensifiers for cylinders. Two working phases. Work phase 1: High flow, low pressure Work phase 2: Low flow, high pressure		
Visit our website <a href="http://www.dynaset.com">www.dynaset.com</a> for detailed information.						



## HYDRAULIC POWER TAKE-OFF (PTO)



## PTO

		HVO 33	HPTO
<b>OUTPUT CHARACTERISTICS</b>			
Power max.	<b>kW</b>	9	40
flow max.	<b>l / min (U.S. gpm)</b>	30 (7.9)	custom
Pressure max.	<b>bar (psi)</b>	180 (2610)	custom
<b>DESCRIPTION</b>			
Dynaset PTO products transform the power of the vehicle's engine to hydraulic power.		Designed for ATV and small vehicle installations.	Customizable to fit all vans and trucks.
Visit our website <a href="http://www.dynaset.com">www.dynaset.com</a> for detailed information.			



## HYDRAULIC POWER UNIT TECHNOLOGY





## HYDRAULIC POWER UNIT TECHNOLOGY

HEU	Hydraulic expansion unit for tunnel wall reinforcement with swellex type anchors.
HPU	Complete ready-to-use hydraulic power pack with 18 hp gasoline engine. Delivers 38l/min (10.03 U.S. gpm) hydraulic flow and 210 bar (3046 psi) pressure.
HRU	Hydraulic power source for rescue tools. Closed circuit hydraulic-to-hydraulic power unit. It delivers 800 bar (11603 psi), 2x5 l/min (2x1.32 U.S. gpm) of hydraulic power.

Visit our website [www.dynaset.com](http://www.dynaset.com) for detailed information.



# DE-ICING TECHNOLOGY



## DE-ICING TECHNOLOGY

Description	Dynaset De-icing Technology provides fast, highly automated and cost effective modules for spreading de-icing fluids to remove ice or prevent icing.
Base machine	Suitable for all standard commercial trucks and tractors.
Applications	Roads, parking lots, runways, aircrafts.
Features	Automatically adjusting spraying system, easy user interface, additional spraying pistol and hose reel.
Benefits	Optimal fluid consumption (g/m <sup>2</sup> ) with all vehicle speed levels. High pressure spraying system ensures even de-icer coverage. The system is powered by hydraulics with zero emissions.

Visit our website [www.dynaset.com](http://www.dynaset.com) for detailed information.



## INSTALLATION VALVES



VALVES				
PV-SAE 3/4"	Priority valve system, sandwich mounted with solenoid for all mobile installations. Simplifies hydraulic installations.	Pressure max. 350 bar (5076 psi) Flow max.70 - 145 l/min (18.48 - 32.28 U.S. gpm)	Through flow 0 - 150 l/min (39.6 U.S. gpm)	
PV-SAE 1"				
PV-SAE 1 1/4"				
SV SAE 1	SAE Solenoid valve	Flow max. 100 l/min (26.4 U.S. gpm)		
SV SAE 1 1/4"				
LSV 40	LS-valve, solenoid control operated, pressure relief.	Flow max. 40 - 150 l/min (10.56 - 39.6 U.S. gpm)		
LSV 60				
LSV 95				
LSV 150				
VR 50PK 1/2"	Oil flow limiter, pressure compensated	Flow max. 50 l/min - 180 l/min (13.2 - 47.52 U.S. gpm)		
VR 95PK 3/4"				
VRD 180PK 1"				
SV 70NC 1/2"	Solenoid valve 2/2	Flow max. 70 - 150 l/min (18.48 - 39.6 U.S. gpm) or LS-connection, Pressure max. 350 bar (5076 psi)		
SV 150NC 1"				
VKV 90 3/4"	Free flow valve, solenoid and pressure control	Pressure max. 315 bar (4568 psi)		
HMV Modular Valve systems	DYNASET HMV is full set of Valve blocks to be stacked for compact installation in every project. LS-Valves, Flow limiters, Directional control etc. available			

Visit our website [www.dynaset.com](http://www.dynaset.com) for detailed information.



# HHK

## HYDRAULIC GRINDER



			HHK 200 - 12	HHK 200 - 17
<b>OUTPUT CHARACTERISTICS</b>				
	Speed	<b>rpm/min</b>	3000	3000
	Ø	<b>mm (in)</b>	170 (6.7)	170 (6.7)
Gridstone	width	<b>mm (in)</b>	9 - 32 (2.37 - 1.26)	9 - 32 (2.37 - 1.26)
	Hole	<b>mm (in)</b>	13-32 (0.5-1.26)	13-32 (0.5-1.26)
<b>HYDRAULIC POWER REQUIREMENTS</b>				
	Flow min.	<b>l / min (U.S. gpm)</b>	12 (3.17)	17 (4.49)
	Pressure max.	<b>bar (psi)</b>	210 (3046)	210 (3046)
<b>OVERALL DIMENSIONS</b>				
	Length	<b>mm</b>	301 (11.8)	301 (11.8)
	Width	<b>mm</b>	265 (10.4)	265 (10.4)
	Height	<b>mm</b>	200 (7.9)	200 (7.9)
	Weight	<b>kg</b>	12,5 (27.5)	12,5 (27.5)
Visit our website <a href="http://www.dynaset.com">www.dynaset.com</a> for detailed information.				



# HV / HVY

## HYDRAULIC WINCH / HYDRAULIC WINCH UNIT





## HV / HVY

		HV 5t	HV 10t	HV 20t	HVY 5t	HVY 10t	HVY 20t	HVY 30t
<b>OUTPUT CHARACTERISTICS</b>								
Pulling power	<b>kg lbs</b>	5000 (11023)	10000 (22046)	20000 (44092)	5000 (11023)	10000 (22046)	20000 (44092)	30000 (66139)
Pulling speed	<b>m / min (ft/min)</b>	9,1 (29.9)	6,4 (21)	7,8 (25.6)	9,1 (29.9)	6,5 (21.3)	6,5 (21.3)	12 (39.4)
Wire	<b>∅ mm (in)</b>	12 (7.9)	14 (7.9)	18 (0.7)	12 (0.5)	14 (0.6)	18 (0.7)	22 (0.9)
	<b>length m (ft)</b>	220 (722)	170 (558)	180 (591)	220 (722)	170 (558)	180 (591)	700 (2297)
<b>HYDRAULIC POWER REQUIREMENTS</b>								
Flow min.	<b>l / min (U.S. gpm)</b>	50 (13.2)	60 (15.84)	120 (31.68)	50 (13.2)	60 (15.84)	120 (31.68)	200 (52.8)
Pressure max.	<b>bar (psi)</b>	200 (2901)	200 (2901)	200 (2901)	200 (2901)	200 (2901)	200 (2901)	250 (3626)
<b>OVERALL DIMENSIONS</b>								
Length	<b>mm (in)</b>	750 (29.5)	1010 (39.8)	1010 (39.8)	930 (36.6)	1010 (39.8)	1010 (39.8)	1623 (63.9)
Width	<b>mm (in)</b>	750 (29.5)	840 (33)	840 (33)	750 (29.5)	840 (33)	840 (33)	1620 (63.8)
Height	<b>mm (in)</b>	770 (30.3)	1320 (51.2)	1320 (51.2)	1150 (45.3)	1320 (51.2)	1320 (51.2)	2400 (94.5)
Weight	<b>kg (lbs)</b>	350 (772)	630 (1389)	670 (1477)	540 (1190)	800 (1764)	840 (1852)	4300 (9480)
HV is connected to work machine's hydraulic system. HVY is a complete independent hydraulic power pack unit with gasoline motor and electric start. Visit our website <a href="http://www.dynaset.com">www.dynaset.com</a> for detailed information.								





UTILIZE HYDRAULICS - INCREASE PRODUCTIVITY



## CONTENTS



### ELECTRICITY

HG Hydraulic Generator  
HGV POWER BOX Variable Hydraulic Generator System  
HGV Variable Hydraulic Generator System  
HWG Hydraulic Welding Generator  
HGG Hydraulic Ground Power Generator



### HIGH PRESSURE WATER

HPW Hydraulic High Pressure Water Pump  
HPW Hydraulic Power Washer  
KPL High Pressure Street Washing Unit  
HPW-DUST High Pressure Dust Suppression System  
PPL High Pressure Pipe Cleaning Unit  
HPW-FIRE High Pressure Firefighting System  
FP Firefighting Piercing Kit  
HDF Hydraulic Drilling Fluid Pump  
JPL High Pressure Bin Washing System  
HSP Hydraulic Submersible Pump



### COMPRESSED AIR

HK Hydraulic Piston Compressor  
HKL Hydraulic Rotary Vane Compressor  
HKR Hydraulic Screw Compressor



### MAGNET POWER

HMG PRO Hydraulic Magnet Generator  
MAG Magnet  
HMAG PRO Hydraulic Magnet



### VIBRATION

HVB Hydraulic Vibra  
HVD Hydraulic Directional Vibra  
HRC Hydraulic Reversal Cylinder



### POWER BOOSTING

HPI Hydraulic Pressure Intensifier  
HPIC Hydraulic Pressure Intensifier for Cylinder



### KNOW-HOW

Hydraulic Power Take-off (PTO)  
Hydraulic Power Unit Technology  
HEU Hydraulic Expansion Unit  
HRU Hydraulic Rescue Unit  
De-icing Technology  
Installation Valves  
HHK Hydraulic Grinder  
HV/HVY Hydraulic Winch / Winch Unit

## CONTACT

**Menotie 3**  
**33470 Ylöjärvi**  
**FINLAND**

**tel. + 358 3 3488 200**  
**info@dynaset.com**



[www.dynaset.com](http://www.dynaset.com)

[www.facebook.com/dynaset](http://www.facebook.com/dynaset)

[www.youtube.com/dynasetoy](http://www.youtube.com/dynasetoy)



**DYNASET**

POWERED BY HYDRAULICS



DYNASET.COM

SALES CONTACT:

