

MILE MARKER



WINCHES



LOCKING HUBS



RECOVERY GEAR



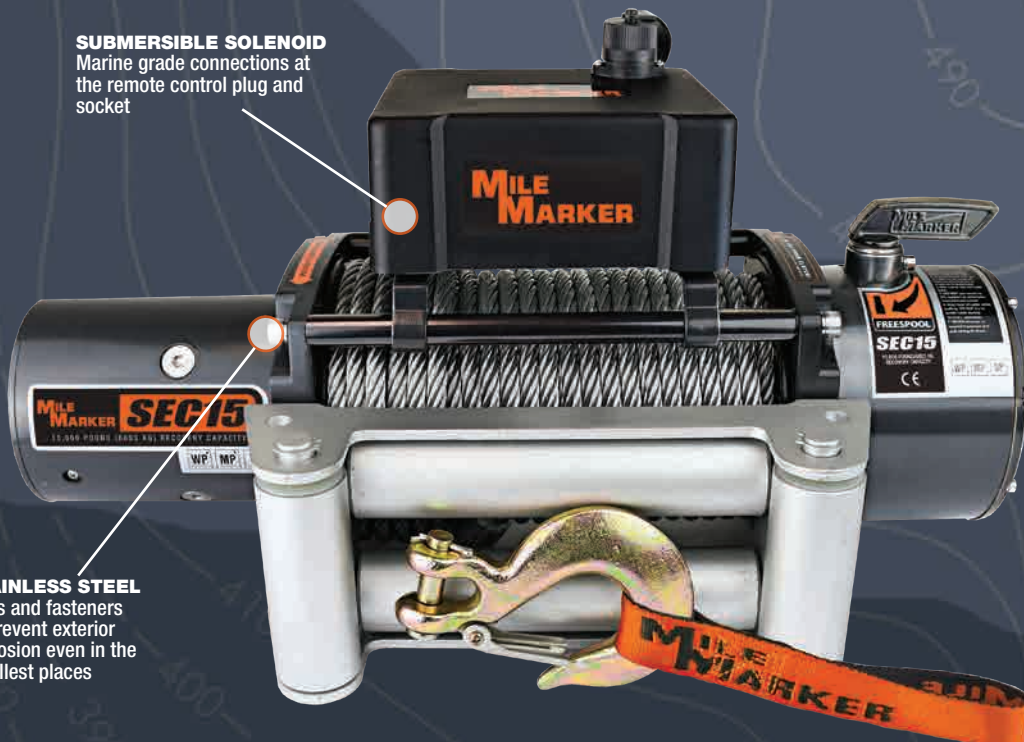
ACCESSORIES

2021 PRODUCT CATALOG

JEEP/TRUCK/SUV WINCHES

SUBMERSIBLE SOLENOID
Marine grade connections at the remote control plug and socket

STAINLESS STEEL
Bolts and fasteners to prevent exterior corrosion even in the smallest places



ALL WEATHER WINCHING

Our completely sealed, fully submersible winch is a design that can truly spite the weather. A winch at its core is a tool, waiting for its call to action. Wherever you off-road, our waterproof winches will always be ready to perform. No rusting, no corroding, no pitting.

STRENGTH, PERFORMANCE, VALUE

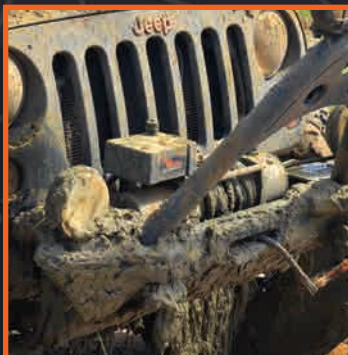
Mile Marker winches define value – both our working range line speeds and our performance are the best in the class. This comes from years of motor tuning and gear ratio development to ensure high quality performance across the electric winch line.

CHOOSE THE WINCH FOR YOU

We offer 8,000, 9,500, 12,000 and 15,000 pound units for your off-roading truck, Jeep or SUV. Our 18,000 pound winch's innovative design is perfect for your tow truck or industrial DC applications.



WATERPROOF



MUD PROOF



SNOW PROOF

SEC18



77-50280W

FEATURES:

- 7.7 HP Series Wound Motor
- Rugged Planetary Gear Sets
- Clockable Gear Housing
- Fast Line Speeds
- Submersible, 400 Amp Solenoid
- Automatic Load Holding Brake
- Corrosion Resistant Stainless Steel Fasteners
- 79' Steel Cable
- Roller Fairlead
- Waterproof
- Handheld Remote Control

STRONGEST ELECTRIC WINCH

The SEC18 pulls 18,000 pounds of recovery power. This industrial grade winch is perfect for your tow truck, fire truck, utility vehicle, or industrial DC. Our SEC18 is lightweight for its strength and features fast line speeds.

SPECIFICATIONS (18K):

Rated Line Pull	18000 lbs. (8164 kg)
Gear Train	3 Stage planetary
Gear Ratio	315:1
Motor	12 Volt DC, input power 7.7 hp (5.6 kw) 24 Volt available
Remote	Power in, Power out with 12' cable (3.7 m)
Dimensions (LxWxH)	26" X 8.5" X 8.5" (662 mm X 214 mm X 214 mm)
Steel Cable	1/2" X 79' (12.7 mm X 24 m) (19,505 lb. breaking strength)
Drum Size Diameter x Length	4" X 10" (101.6 mm X 254 mm)
Flange Diameter	9" (228.6 mm)
Net Weight	154 lb. (69.8 kg)
Bolt Pattern	8 bolt pattern Outer 6.5" X 12" (165 mm X 304.8 mm) Inner 4.5" X 12" (114.3 mm X 304.8 mm)

PERFORMANCE (18K):

Line Pull	Line Speed		Motor Current		
	lb	kg		fpm (12V)	mpm (12V)
0	0		23.6	7.2	68
6000	2724		10.2	3.1	235
8000	3632		9.2	2.8	282
10000	4540		4.9	1.5	310
12000	5448		3.9	1.2	378
15000	6810		3.3	1	420
18000	8172		2.6	0.8	469

SEC15

BIG WINCH POWER, SMALL WINCH WEIGHT

Our 15,000 pound winch packs heavy duty power. The light, compact design mounts easily to a full size truck or Jeep. Each SEC15 includes a 15' recovery strap for longer pulls.



Steel Cable

76-50260W



Synthetic Rope

76-53260W

FEATURES:

- 6.8 HP Series Wound Motor
- Rugged Planetary Gear Sets
- Clockable Gear Housing
- Fast Line Speeds
- Submersible, 400 Amp Solenoid
- Automatic Load Holding Brake
- Corrosion Resistant Stainless Steel Fasteners
- 79' Steel Cable or 72' Synthetic Rope
- Aluminum Hawse or Roller Fairlead
- Waterproof
- Handheld Remote Control
- Includes 15' Recovery Strap

SPECIFICATIONS (15K):

Rated Line Pull	15000 lbs (6803 kgs)
Gear Train	3 Stage planetary
Gear Ratio	294:1
Motor	Series wound, 6.8 hp (5 kw), 12 Volt 24 Volt available
Remote	Power in, Power out with 12' cable (3.7 m)
Dimensions (LxWxH)	22" X 6.3" X 8.3" (558 mm X 160 mm X 211 mm)
Steel Cable	25/64" X 79' (10 mm X 24 m) (16,409 lb. breaking strength)
Synthetic Rope	25/64" X 72' (10 mm X 22 m) (18,078 lb. breaking strength)
Drum Size Diameter x Length	2.9" X 8.9" (75 mm X 226 mm)
Net Weight Synthetic Rope	63 lbs (28.5 kgs)
Net Weight Steel Cable	85 lbs (38.5 kgs)
Bolt Pattern	4 bolt pattern, 4.5" x 10" (114.3 mm X 254 mm)

PERFORMANCE (15K):

Line Pull		Line Speed		Motor Current
lb	kg	fpm	mpm	amps @ 12 V
0	0	16.7	5	120
4000	1816	12	3.7	202
6000	2724	10.5	3.2	225
8000	3632	9.2	2.8	250
10000	4540	7.9	2.4	310
12000	5448	6.6	2	355
15000	6810	5.9	1.8	420



LIGHTEST, MOST COMPACT 15K WINCH IN THE INDUSTRY



INCLUDES 15' RECOVERY STRAP

SEC12 & SEC95

PROVEN WINCH DESIGN, UNMATCHED VALUE

Heavy duty series wound motors and rugged planetary gear sets are the backbone of Mile Marker. With robust controls and a fully sealed solenoid and body, the SEC12 and SEC95 are proven winches at an unmatched value.



*Steel Cable 76-50251BW
Synthetic Rope 76-53251BW



*Steel Cable 76-50246BW
Synthetic Rope 76-53246BW

SPECIFICATIONS (12K):

Rated Line Pull	12000 lbs (5443 kg)
Gear Train	3 Stage planetary
Gear Ratio	294:1
Motor	Series wound, 4.9 hp (3.6 kw), 12 Volt, 24 Volt available
Remote	Power in, Power out with 12' cable (3.7 m)
Dimensions (LxWxH)	20.8" X 6.3" X 7.8" (528 mm X 161 mm X 200 mm)
Steel Cable	3/8" X 100' (9.5 mm X 30.5 m) (14,400 lb. breaking strength)
Synthetic Rope	3/8" X 92' (9.5 mm X 28 m) (18,078 lb. breaking strength)
Drum Size Diameter X Length	2.6" X 8.3" (67 mm X 212 mm)
Net Weight Synthetic Rope	48 lbs (30.3 kg)
Net Weight Steel Cable	67 lbs (41.7 kg)
Bolt Pattern	4 bolt pattern, 4.5" x 10" (114.3 mm X 254 mm)

PERFORMANCE (12K):

Line Pull	Line Speed	Motor Current		
lb	kg	fpm	mpm	amps @ 12 V
0	0	16.4	5	85
4000	1816	8.8	2.7	160
6000	2724	7.5	2.3	191
8000	3632	6.7	2	235
10000	4540	5.6	1.7	270
12000	5448	4.9	1.5	320

SPECIFICATIONS (9.5K):

Rated Line Pull	9500 lbs (4309 kg)
Gear Train	3 Stage planetary
Gear Ratio	210:1
Motor	Series wound, 4.9 hp (3.6 kw), 12 Volt, 24 Volt available
Remote	Power in, Power out with 12' cable (3.7 m)
Dimensions (LxWxH)	20.8" X 6.3" X 7.8" (528 mm X 161 mm X 200 mm)
Steel Cable	3/8" X 100' (9.5 mm X 30.5 m) (14,400 lb. breaking strength)
Synthetic Rope	3/8" X 92' (9.5 mm X 28 m) (18,078 lb. breaking strength)
Drum Size Diameter X Length	2.64" X 8.7" (67 mm X 222mm)
Net Weight Synthetic Rope	48 lbs (30.3 kg)
Net Weight Steel Cable	67 lbs (41.7 kg)
Bolt Pattern	4 bolt pattern, 4.5" x 10" (114.3 mm X 254 mm)

PERFORMANCE (9.5K):

Line Pull	Line Speed	Motor Current		
lb	kg	fpm	mpm	amps @ 12 V
0	0	21	6.4	86
2000	908	11	3.4	150
4000	1816	8.8	2.7	205
6000	2724	7.5	2.3	235
8000	3632	6	1.8	252
9500	4313	4.3	1.3	330

FEATURES:

- 4.9 HP Series Wound Motor
- Rugged Planetary Gear Sets
- Clockable Gear Housing
- Fast Line Speeds
- Submersible, 400 Amp Solenoid
- Automatic Load Holding Brake
- Corrosion Resistant Stainless Steel Fasteners
- 100' Steel Cable or 92' Synthetic Rope
- Aluminum Hawse or Roller Fairlead
- Waterproof
- Handheld Remote Control

SEC8

WORKING RANGE PERFORMANCE

The SEC8 is light and affordable for the standard off road vehicle. With robust controls and a fully sealed solenoid and body, Mile Marker redefines performance in the 8,000 pound winch class.



Steel Cable

77-50141W



Synthetic Rope

77-53141W

SPECIFICATIONS (8K):

Rated Line Pull	8000 lbs (3629 kg)
Gear Train	3 Stage planetary
Gear Ratio	150:1
Motor	Series wound, 4.9 hp (3.6 kw), 12 V 24 Volt available
Remote	Power in, Power out with 12' cable (3.7 m)
Dimensions (LxWxH)	20.8" X 6.3" X 7.8" (528 mm X 161 mm X 200 mm)
Steel Cable	5/16" X 100' (7.9 mm X 30.5 m) (9,800 lb. breaking strength)
Synthetic Rope	5/16" X 92' (7.9 mm X 28 m) (13,228 lb. breaking strength)
Drum Size Diameter X length	2.5" X 8.3" (63 mm X 222 mm)
Net Weight Synthetic Rope	49 lbs (37 kg)
Net Weight Steel Cable	63 lbs (31.7 kg)
Bolt Pattern	4 bolt pattern, 4.5" x 10" (114.3 mm X 254 mm)

FEATURES:

- 4.9 HP Series Wound Motor
- Rugged Planetary Gear Sets
- Clockable Gear Housing
- Fast Line Speeds
- Submersible, 400 Amp Solenoid
- Automatic Load Holding Brake
- Corrosion Resistant Stainless Steel Fasteners
- 100' Steel Cable or 92' Synthetic Rope
- Aluminum Hawse or Roller Fairlead
- Waterproof
- Handheld Remote Control

PERFORMANCE: (8K)

Line Pull		Line Speed		Motor Current
lb	kg	fpm	mpm	amps @ 12 V
0	0	38.1	11.6	70
2000	908	14.1	4.3	136
4000	1816	12.5	3.8	198
6000	2724	9.8	3	264
8000	3632	8.2	2.5	284



TRAILER & UTILITY WINCHES

COMPACT SIZE, POWERFUL PULL

The SEC4500 defines fast line speeds and low amperage draw for your large side by side or UTV. The 2000 lb. utility winches features a wireless remote control and a high output motor.



76-50115BW

FEATURES (4.5K):

- 3.7 HP Series Wound Motor
- Rugged Planetary Gear Sets
- Clockable Gear Housing
- Fast Line Speeds
- Submersible, 250 Amp Solenoid
- Automatic Load Holding Brake
- Corrosion Resistant Stainless Steel Fasteners
- 79' Steel Cable
- Roller Fairlead
- Waterproof
- Handheld Remote Control
- Includes Tow Strap
- Includes Mounting Plate

SPECIFICATIONS (4.5K):

Rated Line Pull	4500 lbs (2041 kg)
Gear Train	3 Stage planetary
Gear Ratio	150:1
Motor	12 Volt DC, input power 3.7hp (2.7 kw) 24 Volt available
Remote	Power in, Power out with 12' cable (3.7 m)
Dimensions (LxWxH)	17.3" X 6.3" X 7.8" (440 mm X 161 mm X 200 mm)
Steel Cable	1/4" X 79' (6.3 mm X 24 m) (7,000 lb. breaking strength)
Drum Size Diameter X Length	2.5" X 5.5" (63 mm X 140 mm)
Net Weight Steel Cable	49 lbs (23 kg) (with mounting plate)
Bolt Pattern	4 bolt pattern 6.5" X 4.5" (165.9 mm X 114.3 mm)

PERFORMANCE (4.5K):

Line Pull	Line Speed	Motor Current		
lb	kg	fpm	mpm	amps @ 12 V
0	0	38.1	11.6	70
1500	681	17.1	5.2	125
3000	1362	14.1	4.3	160
4500	2043	11.8	3.6	205



76-50200

FEATURES (2K):

- High Output Motor
- Automatic Load Holding Dynamic Brake
- Fast Line Speeds
- 50' Steel Cable
- Roller Fairlead
- All Metal Planetary Gearing
- Free Spooling
- Wireless Remote Control

SPECIFICATIONS (2K):

Rated Line Pull	2000 lbs (907 kg)
Gear Train	2 Stage planetary
Gear Ratio	163:1
Motor	Permanent Magnet 12 Volt 1.9 hp (1.4 kw)
Remote	Wireless remote control
Dimensions (LxWxH)	11.2" X 4.5" X 4.2" (285.5 mm X 113 mm X 107.5 mm)
Steel Cable	5/32" X 50' (4 mm X 15.2 m)
Drum Size Diameter X Length	1.2" X 2.8" (32 mm X 72 mm)
Net Weight	16 lb. (7.2 kg)
Bolt Pattern	2 bolt pattern 1.8" X 3" (48 mm X 76 mm)

PERFORMANCE (2K):

Line Pull	Line Speed	Motor Current		
lb	kg	fpm	mpm	amps @ 12 V
0	0	14.0	4.3	14
1000	454	9.0	2.7	60
1500	680	7.5	2.3	90
2000	908	5.9	1.8	115

POWERSPORTS WINCHES

WATERPROOF

Marine grade connectors at the control and solenoid



HIGH OUTPUT MOTOR

These winches pack enough punch to take on the most daunting task

COMPACT POWER

The Mile Marker Powersports winch line packs powerful recovery into a rugged, compact size. Your ATV or UTV can always rely on our planetary gear systems and high output motor for your most daunting off road pulls. No weather worries with completely sealed units to the IP68 Standard.

CHOOSE THE WINCH FOR YOU

We offer 5000, 3500, or 2500 pound winches to best suit your vehicle. Equipped with synthetic rope or steel cable.



FASTEST, MOST POWERFUL



RUGGED COMPACT SIZE



COMPLETELY ELEMENT SEALED

PE5000

PACK THE POWER

The PE5000 slams raw power into a lightweight, compact design for your ATV/UTV. Metal planetary gear systems and a fully waterproof solenoid lets you winch wherever you ride.



Steel Cable

77-50120W



Synthetic Rope

77-53120W

SPECIFICATIONS (5K):

Rated Line Pull	5000 lbs (2267.9 kg)
Gear Train	3 Stage planetary
Gear Ratio	165:1
Motor	12 Volt DC, input power 3.8hp 24 Volt available
Remote	Power in, Power out with 12' cable (3.7 m)
Winch Dimensions (LxWxH)	15.6" X 4.6" X 4.7" (397 mm X 117 mm X 119.8 mm)
Steel Cable	1/4" X 79' (6.3 mm X 24 m) (5,600 lb. breaking strength)
Synthetic Rope	1/4" X 50' (6.3 mm X 15.2 m) (5,071 lb. breaking strength)
Drum Size Diameter X Length	2" X 5.4" (51 mm X 137.5 mm)
Net Weight Synthetic Rope	19.5 lbs (8.6 kg)
Net Weight Steel Cable	23.7 lbs (10.8 kg)
Bolt Pattern	4 bolt pattern 3" X 6.6" (76 mm X 168 mm)

FEATURES:

- 3.8 HP Permanent Magnet Motor
- All Metal Planetary Gearing
- Submersible, 250 Amp Solenoid
- Automatic Load Holding Brake
- Center Focused Drum
- Fast Line Speeds
- 79' Steel Cable or 50' Synthetic Rope
- Aluminum Hawse or Roller Fairlead
- Waterproof
- Handheld Remote Control

PERFORMANCE (5K):

Line Pull		Line Speed 12V		Motor Current 12V
lbs	kgs	fpm	mpm	amp
0	0	20.7	6.3	34
2000	908	15.1	4.6	135
3000	1362	11.5	4	155
4000	1816	10.5	3.2	210
5000	2270	9.2	2.8	250



PE3.5 & PE2.5



PE3.5 Steel Cable

77-50112BW



PE3.5 Synthetic Rope

77-53112BW



PE2.5 Steel Cable

77-50105BW

FEATURES:

- 2.4 HP Permanent Magnet Motor
- All Metal Planetary Gearing
- Submersible, 200 Amp Solenoid
- Automatic Load Holding Brake
- Center Focused Drum
- Fast Line Speeds
- 42' Steel Cable or 50' Synthetic Rope
- Aluminum Hawse or Roller Fairlead
- Waterproof
- Handheld and Handlebar Controls

SPECIFICATIONS:

Rated Line Pull	PE3.5	3500 lbs (1589 kg)
Rated Line Pull	PE2.5	2500 lbs (1135 kg)
Gear Train	All	2 Stage planetary
Gear Ratio	ALL	242:1
Motor	PE3.5	2.4 hp (1.8 kw), 12 V DC
Motor	PE2.5	2.4 hp (1.8 kw)
Remote	All	Power in, Power out with 12' cable (3.7 m)
Dimensions (LxWxH)	PE3.5	13.5" X 4.5" X 4.3" (344 mm X 116 mm X 108 mm)
Dimensions (LxWxH)	PE2.5	13.2" X 4.6" X 4.3" (334 mm X 116 mm X 108 mm)
Steel Cable	PE3.5	7/32" X 42' (5.5 mm X 12.7 m) (5,600 lb. breaking strength)
Steel Cable	PE2.5	3/16" X 42' (4.7 mm X 12.7 m) (5,600 lb. breaking strength)
Synthetic Rope	PE3.5	7/32" X 50' (5.5 mm X 15.2 m) (5,071 lb. breaking strength)
Drum Size Diameter X Length	ALL	2" X 3.1" (50 mm X 80 mm)
Net Weight Steel Cable	PE3.5	17.3 lbs (7.8 kg)
Net Weight Steel Cable	PE2.5	15.1 lbs (6.8 kg)
Net Weight Synthetic rope	PE3.5	14.3 lbs (6.4 kg)
Bolt Pattern	All	4 Bolt pattern, 4.8" X 3" (124 mm X 76 mm)

PERFORMANCE: PE3.5

Line Pull	Line Speed	Motor Current		
lb	kg	fpm	mpm	amps @ 12 V
0	0	18	5.5	22
1000	454	14.8	4.5	82
2000	908	12.5	3.8	145
3000	1362	10.8	3.3	225
3500	1589	9.8	3	250

PERFORMANCE: PE2.5

Line Pull	Line Speed	Motor Current		
lb	kg	fpm	mpm	amps @ 12 V
0	0	23	7	35
1000	454	18	5.5	100
1500	681	16	4.8	128
2000	908	14	4.2	150
2500	1135	12	3.6	190

MOUNTING SYSTEMS

ATV/UTV MOUNTS

The high quality choice for ATV and UTV winch mounts. Heavy duty steel construction and powder coating finishes enhance durability for these made to order custom mounts.



ATV/UTV MOUNT APPLICATION GUIDE

Make	Part Number	Year	Model
ARCTIC CAT ATV			
Arctic Cat	51-1005	'96-'00	500 4x4
Arctic Cat	51-1005	'96-'01	400 2x4, 4x4
Arctic Cat	51-1005	'96-'02	500i
Arctic Cat	51-1005	'98	454 2x4 / 4x4
Arctic Cat	51-1005	'98-'01	300 2x4, 4x4
Arctic Cat	51-1005	'99-'05	250 2x4, 4x4
Arctic Cat	51-1005	'00-'02	500 AUTO
Arctic Cat	51-1005	'01	500 4x4
Arctic Cat	51-1005	'05	300 2x4, 4x4
Arctic Cat	51-1010	'02-'04	300 2x4, 4x4
Arctic Cat	51-1010	'02-'05	400 2X4, 4X4 (ACT) (i)
Arctic Cat	51-1010	'03-'08	400 Automatic 2x4, 4x4 (LE)
Arctic Cat	51-1012	'08-'09	366 4x4
Arctic Cat	51-1015	'06-'16	700 4x4 (Auto) (Auto EFI) (M4) (H1 SE)
Arctic Cat	51-1015	'06-'16	700 Diesel
Arctic Cat	51-1015	'06-'16	700 Mud Pro
Arctic Cat	51-1015	'09-'14	550 4x4
Arctic Cat	51-1015	'10-'12	450 4X4
ARCTIC CAT UTV			
Arctic Cat	51-1860	'06-'09	650 Prowler H1 XT 4X4
Arctic Cat	51-1860	'08-'14	700 Prowler (XTX)
Arctic Cat	51-1860	'09-'14	550 Prowler (XT)
Arctic Cat	51-1860	'10-'14	1000 Prowler XTZ 4X4
Arctic Cat	51-1878	'20	Prowler Pro Crew
ARGO ATV			
Argo ATV	51-1180	'18	500 Xplorer XR (LE)
Argo ATV	51-1180	'18	500 Xplorer XRT (LE)
Argo ATV	51-1180	'18	1000 Xplorer XRT (LE)
BOBCAT UTV			
BOBCAT	51-1846	'19-'20	3400 4X4
BOBCAT	51-1859	'11-'14	3200 Series
BOBCAT	51-1859	'12-'14	3400 4X4
CAMAM ATV			
CanAm	51-1005	'99-'05	500 Traxter
CanAm	51-1005	'02-'04	500 Quest
CanAm	51-1005	'02-'04	650 Quest
CanAm	51-1110	'03-'05	330 Outlander 2x4, 4x4 (XT)*
CanAm	51-1110	'03-'05	330 Outlander Max 4x4 (XT)*
CanAm	51-1110	'03-'05	400 Outlander 4X4 (XT)*

Make	Part Number	Year	Model
CanAm	51-1112	'06-'12	400 Outlander 4X4 (XT)*
CanAm	51-1112	'06-'12	400 Outlander Max 4x4 (XT)*
CanAm	51-1112	'06-'12	650 Outlander (XT)*
CanAm	51-1112	'06-'12	650 Outlander MAX (XT)*
CanAm	51-1112	'06-'12	800 Outlander MAX (XT)*
CanAm	51-1112	'07-'12	500 Outlander (XT)*
CanAm	51-1112	'11	800R Outlander (XT)*
CanAm	51-1112	'11-'12	800R Outlander MAX (XT)*
CanAm	51-1112	'12	800R Outlander (XT)*
CanAm	51-1112	'12-'15	800 Outlander (XT)*
CanAm	51-1112	'13	400 Outlander Max 4x4 (XT)*
CanAm	51-1112	'13-'14	400 Outlander 4X4 (XT)*
CanAm	51-1112	'13-'15	500 Outlander (XT)*
CanAm	51-1112	'13-'15	800 Outlander MAX (XT)*
CanAm	51-1112	'13-'18	650 Outlander MAX (XT)*
CanAm	51-1112	'13-'18	1000 Outlander 4x4 (XT)*
CanAm	51-1112	'13-'18	1000 Outlander MAX 4x4 (XT)*
CanAm	51-1112	'14-'15	400 Outlander Max 4x4 (XT)*
CanAm	51-1112	'15	400 Outlander 4X4 (XT)*
CanAm	51-1112	'16-'17	570 Outlander (XT)*
CanAm	51-1112	'16-'17	570 Outlander MAX (XT)*
CanAm	51-1115	'07-'11	800 Renegade
CAMAM UTV			
CanAm	51-18104	'13-'17	1000 Maverick
CanAm	51-1811	'11-'17	800 Commander
CanAm	51-1811	'11-'17	1000 Commander
CanAm	51-1819	'18-'19	800 Maverick Trail
CanAm	51-1819	'18-'19	1000 Maverick Trail
CanAm	51-1819	'19	1000 Maverick Sport
CAT UTV			
CAT	51-1878	'18-'19	CUV82
CAT	51-1878	'18-'19	CUV102D
CAT	51-1878	'19	CUV85 (5-Seater)
CAT	51-1878	'19	CUV105D (5-Seater)
CUB CADET UTV			
Cub Cadet	51-1822	'07-'09	Tracker
Cub Cadet	51-1822	'07-'14	Volunteer
HONDA ATV			
Honda	51-1210	'01-'04	TRX500 Rubicon (All Models)
Honda	51-1215	'95-'97	TRX450 Foreman

Make	Part Number	Year	Model
Honda	51-1215	'95-'04	TRX400 Foreman
Honda	51-1215	'98-'04	TRX450 Foreman
Honda	51-1215	'98-'04	TRX450 Rubicon
Honda	51-1220	'00-'03	TRX350 Rancher
Honda	51-1220	'00-'03	TRX400 Rancher
Honda	51-1220	'04-'06	TRX350 Rancher
Honda	51-1220	'04-'07	TRX400 Rancher
Honda	51-1225	'07-'13	TRX420 Rancher 2x4, 4x4 (All Models)
Honda	51-1225	'14	TRX420 Rancher 4X4 (IRS only)
Honda	51-1230	'03-'05	TRX650 Rincon
Honda	51-1230	'05-'06	TRX500 Foreman
Honda	51-1230	'05-'06	TRX500 Rubicon (All Models)
Honda	51-1230	'06-'17	TRX680 Rincon
Honda	51-1234-A3	'14-'17	TRX500 Foreman (All Models)
Honda	51-1234-A3	'15-'17	TRX420 Rancher 2x4, 4x4 (All Models)
Honda	51-1234-A3	'15-'18	TRX500 Rubicon (No Deluxe Models)
Honda	51-1234-A3	'18	TRX500 Foreman (All Models)
Honda	51-1234-A3	'18	TRX420 Rancher 2x4, 4x4 (All Models)
Honda	51-1234-A3	'19-'20	TRX420 Rancher 2x4, 4x4 (All Models)
Honda	51-1234-A3	'19	TRX500 Foreman (All Models)
Honda	51-1234-A3	'19	TRX500 Rubicon (No Deluxe Models)
Honda	51-1234-A3	'20	TRX520 Foreman (All Models)
Honda	51-1234-A3	'20	TRX520 Rubicon (No Deluxe Models)
Honda	51-1235	'07-'11	TRX500 Foreman
Honda	51-1235	'07-'14	TRX500 Rubicon (All Models)
Honda	51-1236	'12-'13	TRX500 Foreman S/ES/FPE
Honda	51-1240	'93-'00	TRX 300
HONDA UTV			
Honda	51-1815	'09-'13	700 Big Red MUV
Honda	51-18383	'09-'13	700 Pioneer-4
Honda	51-18383	'14-'19	700 Pioneer
Honda	51-18383	'20	700 Pioneer
Honda	51-18393	'15-'18	500 Pioneer
Honda	51-18444	'16-'20	1000 Pioneer
Honda	51-18444	'16-'20	1000 Pioneer-5
JOHN DEERE UTV			
Honda	51-1831	'93-'14	Gator 6X4
Honda	51-1831	'04-'12	Gator HPX
Honda	51-1832	'11-'15	625i Gator XUV
Honda	51-1832	'11-'15	855D Gator XUV
Honda	51-1832	'11-'15	855D Gator XUV S-4
Honda	51-1832	'11-'19	825i Gator XUV
Honda	51-1832	'13-'17	825i Gator XUV S-4
Honda	51-1832	'19	825E Gator XUV
Honda	51-1832	'19	825M Gator XUV
Honda	51-1834	'12-'15	850i Gator RSX
Honda	51-1834	'12-'17	550 Gator XUV

Make	Part Number	Year	Model
Honda	51-1834	'12-'17	550 Gator XUV S4
Honda	51-1834	'16-'17	560 Gator XUV
Honda	51-1834	'16-'17	560 Gator XUV S4
Honda	51-1834	'16-'17	590 Gator XUV S4
Honda	51-1834	'16-'19	590 Gator XUV
Honda	51-1834	'19	590E Gator XUV
Honda	51-1834	'19	590M Gator XUV
KAWASAKI UTV			
Kawasaki	51-1821	'12-'18	4000 Mule (TRANS)
Kawasaki	51-1821	'12-'20	4010 Mule (SE) (TRANS)
Kawasaki	51-1840	'05-'16	600 Mule
Kawasaki	51-1840	'05-'16	610 Mule
Kawasaki	51-1841	'17-'19	400 Mule SX (XC) (SE) (LE)
Kawasaki	51-1842	'08-'13	750 Teryx (RUV)
Kawasaki	51-1843	'12-'13	750 Teryx 4
Kawasaki	51-1843	'14-'17	800 Teryx (LE)
Kawasaki	51-1843	'14-'18	800 Teryx 4 (LE)
Kawasaki	51-1843	'19-'20	800 Teryx 4 (LE)
Kawasaki	51-1862-A	'15-'20	820 Mule Pro FXT
Kawasaki	51-1862-A	'16-'17	1000 Diesel Mule Pro (DX) (DXT)
Kawasaki	51-1862-A	'16-'20	820 Mule Pro FX (LE)
Kawasaki	51-1862-A	'18-'20	820 Mule Pro FXR
KIOTI UTV			
Kioti	51-1880	'14	2200 Mechcon
KUBOTA UTV			
Kubota	51-1812	'04-'09	900 RTV 4X4 (1-1/4" Receiver)
Kubota	51-1812	'08-'10	1100 RTV 4X4 (1-1/4" Receiver)
Kubota	51-1813	'10-'16	900 RTV 4X4 (2" Receiver)
Kubota	51-1813	'10-'16	1140 RTV 4X4 Crew (2" Receiver)
Kubota	51-1814	'09-'16	500 RTV 4X4 (2" Receiver)
Kubota	51-1814	'12-'16	400ci RTV 4X4
Kubota	51-1816	'11-'12	1100 RTV 4X4 (Rect. Tube Bumper)
POLARIS ATV			
Polaris	51-1400	'91-'99	Sportsman 6X6
Polaris	51-1400	'93-'95	Sportsman
Polaris	51-1400	'96-'97	Xplorer 400L (Shaft Drive)
Polaris	51-1400	'96-'98	Xplorer 400 (Chain Drive)
Polaris	51-1400	'97	Xplorer 500 (Shaft Drive)
Polaris	51-1400	'98-'02	Xplorer 400 (Shaft Drive)
Polaris	51-1407	'02-'04	600 Sportsman
Polaris	51-1407	'02-'04	700 Sportsman
Polaris	51-1407	'04	500 Sportsman
Polaris	51-1410	'98-'03	500 Sportsman
Polaris	51-1410	01-'04	400 Sportsman
Polaris	51-1410	'03-'06	330 Magnum 4x4
Polaris	51-1410	'04-'05	330 ATP
Polaris	51-1410	'04-'05	500 ATP

Make	Part Number	Year	Model
Polaris	51-1413	'11	800 Sportsman
Polaris	51-1413	'11-'13	500 Sportsman
Polaris	51-1413	'11-'14	400 Sportsman
Polaris	51-1413	'12	500 Sportsman Touring
Polaris	51-1413	'12-'14	800 Sportsman
Polaris	51-1413	'12	800 Sportsman Big Boss 6X6
Polaris	51-1413	'14	500 Sportsman
Polaris	51-1413	'14	570 Sportsman
Polaris	51-1413	'14	Sportsman Touring
Polaris	51-1413	'15-'19	570 Sportsman
Polaris	51-1413	'15-'19	570 Sportsman SP
Polaris	51-1413	'15-'18	570 Sportsman Touring
Polaris	51-1413	'15	570 Sportsman X2
Polaris	51-1413	'15	Sportsman ETX
Polaris	51-1413	'16-'19	450 Sportsman (H.O.)
Polaris	51-1413	'16-'18	570 Sportsman X2
Polaris	51-1413	'16-'19	850 Sportsman High Lifter
Polaris	51-1413	'18	570 Sportsman 6x6
Polaris	51-1413	'18-'19	850 Scrambler
Polaris	51-1413	'19	850 Sportsman Touring (SP)
Polaris	51-1413	'20	570 Sportsman
Polaris	51-1414	'09-'11	550 Sportsman XP
Polaris	51-1414	'09-'14	850 Sportsman
Polaris	51-1414	'10-'14	550 Sportsman
Polaris	51-1414	'10-'14	550 Sportsman X2
Polaris	51-1414	'10-'14	850 Sportsman Touring
Polaris	51-1414	'10	850 Sportsman X2
Polaris	51-1414	'11	850 Sportsman X2
Polaris	51-1414	'13-'14	850 Scrambler XP
Polaris	51-1414	'13-'17	850 Scrambler
Polaris	51-1414	'14-'17	1000 XP Scrambler
Polaris	51-1414	'15-'18	850 Sportsman
Polaris	51-1414	'15-'18	850 Sportsman Touring (SP)
Polaris	51-1414	'15-'18	1000 XP Sportsman
Polaris	51-1414	'15-'18	1000 XP Sportsman Touring
Polaris	51-1414	'19	850 Sportsman (SP)
Polaris	51-1414	'19	1000 XP Sportsman
Polaris	51-1414	'20	850 Sportsman
Polaris	51-1415	'05-'07	600 Sportsman
Polaris	51-1415	'05-'08	700 Sportsman
Polaris	51-1415	'05-'10	500 Sportsman
Polaris	51-1415	'05-'10	800 Sportsman
Polaris	51-1415	'05	400 Sportsman
Polaris	51-1415	'06-'07	400 Sportsman
Polaris	51-1415	'06	500 Sportsman X2

Make	Part Number	Year	Model
Polaris	51-1415	'07-'08	500 Sportsman X2
Polaris	51-1415	'07	800 Sportsman X2
Polaris	51-1415	'08-'09	500 Sportsman Touring
Polaris	51-1415	'08-'09	800 Sportsman Touring
Polaris	51-1415	'08	700 Sportsman X2
Polaris	51-1415	'09	500 Sportsman X2
Polaris	51-1415	'09	800 Sportsman X2
Polaris	51-1425	'06-'07	300 Hawkeye
Polaris	51-1425	'08-'09	400 Hawkeye
Polaris	51-1425	'08-'09	400 Sportsman
Polaris	51-1425	'08-'10	300 Sportsman
POLARIS UTV			
Polaris	51-1847	'10-'14	400 Ranger 4X4 Midsize
Polaris	51-1847	'11-'13	500 Ranger 4X4 Midsize (Crew)
Polaris	51-1847	'11-'17	Ranger EV 4X4 Midsize
Polaris	51-1847	'13-'14	800 Ranger 4X4 Midsize (2-Seater)
Polaris	51-1847	'15-'16	Ranger ETX Midsize 4x4
Polaris	51-1847	'17-'18	500 Ranger 4X4 Midsize
Polaris	51-1848	'98-'01	Ranger 6X6
Polaris	51-1849	'01-'04	Ranger 4X4
Polaris	51-1850	'05-'08	Ranger (All CC'S)
Polaris	51-1850	'05-'08	Ranger XP (All CC'S)
Polaris	51-1850	'08-'09	700 Ranger Full Size Crew
Polaris	51-1851	'10-'14	800 Ranger Full Size 4x4 [3-Seater] (XP) (HD)
Polaris	51-1852	'08-'14	800 RZR
Polaris	51-1852	'10-'14	800 RZR-4
Polaris	51-1852	'12-'18	570 RZR
Polaris	51-1853	'11-'14	900 RZR
Polaris	51-1853	'11-'14	900 RZR-4
Polaris	51-1853	'15-'18	900 RZR
Polaris	51-1854	'13-'19	900 XP Ranger Full Size
Polaris	51-1854	'14-'18	900 XP Ranger Crew
Polaris	51-1854	'14-'18	900 XP Ranger Crew
Polaris	51-1854	'15-'17	Ranger Diesel
Polaris	51-1854	'15	570 Ranger Full Size (3-Seater)
Polaris	51-1854	'17-'18	1000 XP Ranger Full Size 4x4 Crew
Polaris	51-1854	'17	1001 XP Ranger Full Size 4x4
Polaris	51-1857	'14-'18	570-4 Ranger 4X4 Midsize Crew (4-Seater)
Polaris	51-1857	'14-'19	570 Ranger 4X4 Midsize (2-Seater)
Polaris	51-1857	'16-'18	570-6 Ranger Full Size Crew (6-Seater) 4x4 (Round Tube/800 Body Style)
Polaris	51-1857	'16-'19	570 Ranger Full Size (3-Seater) 4x4 (Round Tube/800 Body Style)

Make	Part Number	Year	Model
Polaris	51-1857	'19	Ranger EV 4X4 Midsize
Polaris	51-1858	'14-'18	1000 RZR XP
Polaris	51-1858	'14-'18	1000 RZR XP-4
Polaris	51-1858	'15-'17	900 RZR-4
Polaris	51-1858	'15-'18	900 RZR S
Polaris	51-1858	'15-'17	900 RZR XC
Polaris	51-1858	'16-'17	900 RZR Trail
Polaris	51-1858	'16-'18	1000 General
Polaris	51-1858	'16-'18	1000 RZR S
Polaris	51-1858	'16-'18	Turbo RZR XP
Polaris	51-1858	'16-'18	Turbo RZR XP-4
Polaris	51-1858	'18	900 RZR S-4
Polaris	51-1885	'18-'20	1000 XP Ranger Full Size 4x4
Polaris	51-1885	'19-'20	1000 XP Ranger Full Size 4x4 Crew
Polaris	51-1885	'20	1000 Ranger

SUZUKI ATV

Suzuki	51-1505	'02-'06	500 Vinson
Suzuki	51-1505	'07	500 Vinson
Suzuki	51-1510	'08-'17	400 King Quad
Suzuki	51-1515	'01-'02	300 King Quad
Suzuki	51-1520	'99-'00	300 King Quad
Suzuki	51-1530	'05-'07	700 King Quad 4x4
Suzuki	51-1530	'06	450 King Quad
Suzuki	51-1530	'07-'10	450 King Quad
Suzuki	51-1530	'08-'16	700 King Quad 4x4
Suzuki	51-1530	'08-'17	750 King Quad 4x4
Suzuki	51-1530	'09-'17	500 King Quad
Suzuki	51-1530	'11-'12	450 King Quad
Suzuki	51-1335	'04-'06	700 Twin Peaks

TEXTRON UTV

Textron	51-1878	'18-'19	Prowler Pro (XT)
Textron	51-1878	'19	Prowler Pro Crew (XT)

YAMAHA ATV

Yamaha	51-1605	'02-'08	660 Grizzly 4x4
Yamaha	51-1610	'98-'01	600 Grizzly 4x4
Yamaha	51-1615	'03-'06	450 Grizzly
Yamaha	51-1615	'03-'07	400 Kodiak
Yamaha	51-1615	'03-'12	450 Kodiak
Yamaha	51-1615	'04-'06	350 Bruin 2x4, 4x4
Yamaha	51-1615	'05-'07	400 Grizzly
Yamaha	51-1615	'07-'09	350 Grizzly 2x4, 4x4
Yamaha	51-1615	'07-'12	450 Grizzly
Yamaha	51-1615	'13-'14	350 Grizzly 2x4, 4x4
Yamaha	51-1618	'16	700 Grizzly 4x4

Make	Part Number	Year	Model
Yamaha	51-1618	'16	700 Kodiak 4x4
Yamaha	51-1618	'17-'20	700 Kodiak 4x4 (SE)
Yamaha	51-1618	'17-'20	Grizzly 4x4 (LE) (SE)
Yamaha	51-1618	'17	700 Grizzly 4x4
Yamaha	51-1618	'19	700 Grizzly 4x4
Yamaha	51-1620	'00-'02	400 Kodiak
Yamaha	51-1625	'07-'08	550 Grizzly 4x4
Yamaha	51-1625	'07-'12	700 Grizzly 4x4
Yamaha	51-1625	'09-'12	550 Grizzly 4x4
Yamaha	51-1625	'13-'14	550 Grizzly 4x4
Yamaha	51-1625	'13-'14	700 Grizzly 4x4
Yamaha	51-1625	'15	700 Grizzly 4x4
Yamaha	51-1640	'07-'09	400i Big Bear
Yamaha	51-1640	'07-'11	400 Big Bear 2x4, 4x4
Yamaha	51-1650	'97-'06	400 Big Bear 2x4, 4x4
Yamaha	51-1655	'95-'05	350 Wolverine
Yamaha	51-1660	'06-'08	450 Wolverine

YAMAHA UTV

Yamaha	51-1635	'04-'08	660 Rhino
Yamaha	51-1635	'06-'11	450 Rhino
Yamaha	51-1635	'06-'13	700 Rhino
Yamaha	51-1637	'16-'17	Wolverine
Yamaha	51-1637	'16-'17	Wolverine R-Spec (SE)
Yamaha	51-1836	'14-'18	Viking
Yamaha	51-1836	'15-'18	Viking VI



MILE MARKER WARRANTY INFORMATION

Mile Marker/Selectro hubs and Conversion Kits Limited Warranty

Mile Marker Industries warrants directly to the first purchaser that part numbers 427, 428, and all Selectro models will be free from defect in material and workmanship appearing under normal use and service for a period of one year.

Mile Marker Industries warrants directly to the first purchaser that part numbers 426 and 460 will be free from defect in material and workmanship appearing under normal use and service for a period of two years.

Mile Marker Industries warrants directly to the first purchaser that part numbers 104, 302, 423, 430, 435, 436, 449SS, 457, 459SS, 466, 470, 481, 490 and 549 will be free from defect in material and workmanship appearing under normal use and service for as long as said purchaser owns the Premium Locking Hubs.

Mile Marker Industries warrants directly to the first purchaser that all Mile Marker Conversion Kits will be free from defect in material and workmanship appearing under normal use and service for a period of one year.

Warranty registration must be submitted at milemarker.com/warranty within thirty days of purchase by the end user. If you discover a hidden defect, Mile Marker will, as its option, repair or replace the product or necessary replacement parts at no charge to you, provided you remove the product from the vehicle and return it prepaid to Mile Marker Industries. If the product was purchased in the United States, the owner must contact our warranty department to get a Return Goods Authorization (RGA) number before returning the product. If the product was purchased outside the United States, the owner must return the product to the original place of purchase.

Mile Marker Industries Hydraulic Winch Limited Warranty

Mile Marker Industries warrants each winch when used in normal service against factory defects in materials and workmanship to the original commercial and recreational purchaser for the period of five years. New cable assemblies are warranted against defects in workmanship and materials when received by the retail purchaser. There is no applicable warranty for cable assemblies after initial use. Excluded from this warranty are the finish of the winch and any condition Mile Marker determines to have been caused by misuse or abnormal use. Warranty registration must be submitted at milemarker.com/warranty within thirty days by the end user. Warranty submissions must reference winch serial number to be valid. Warranty will only be valid for the original purchaser of the winch and installed on the vehicle for which it was originally registered. The owner will be responsible for removing the winch and returning it to Mile Marker freight prepaid unless a determination is made that replacement parts can be sent out which will remedy the problem. Mile Marker will repair or replace any or all winch parts, which after inspection determines to be defective. If the product was purchased in the United States, the owner must contact our warranty department to get a Return Goods Authorization (RGA) number before returning the product. If the product was purchased outside the United States, the owner must return the product to the original place of purchase.

Mile Marker Industries Electric Winch Limited Two Year Warranty

Mile Marker, Industries offers a limited two year warranty to the original retail purchaser for each new Mile Marker electric winch, used as a recreational recovery winch only, against manufacturing defects in workmanship and materials on all mechanical components. Electrical components consisting of motors, solenoids, wiring, wire connectors and associated parts have a limited one year warranty. New cable assemblies are warranted against defects in workmanship and materials when received by the retail purchaser. There is no applicable warranty for cable assemblies after initial use. Excluded from this warranty are the finish of the winch and any condition Mile Marker determines to have been caused by misuse or abnormal use. Warranty registration must be submitted at milemarker.com/warranty within thirty days by the end user. Warranty submissions must reference winch serial number to be valid. Warranty will only be valid for the original purchaser of the winch and installed on the vehicle for which it was originally registered. The owner will be responsible for removing the winch and returning it to Mile Marker freight prepaid unless a determination is made that replacement parts can be sent out which will remedy the problem. Mile Marker will repair or replace any or all winch parts, which after inspection determines to be defective. If the product was purchased in the United States, the owner must contact our warranty department to get a Return Goods Authorization (RGA) number before returning the product. If the product was purchased outside the United States, the owner must return the product to the original place of purchase.

For full warranty and general warranty procedure and policy visit milemarker.com/warranty



**MILE
MARKER**

2121 BLOUNT ROAD
POMPANO BEACH, FL 33069 USA

MILEMARKER.COM
INFO@MILEMARKER.COM
800.886.8647

