

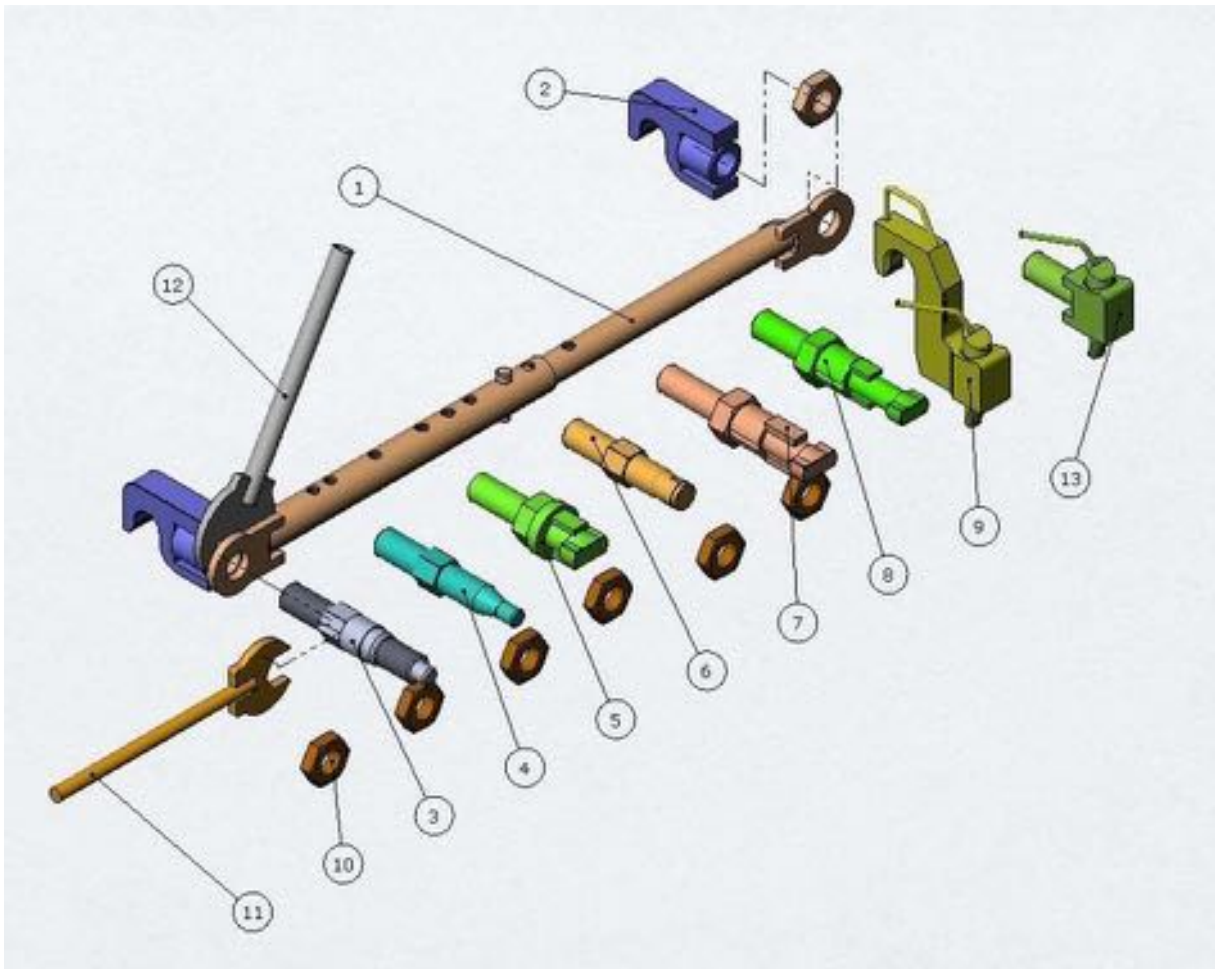
1.a

INSTRUCTION / MANUAL VDZ SYSTEM. 2014

Pages 1 to 20

To guarantee any warranty issues you must clearly follow our operating procedures, any products operating out of this scope of instructions or being used in an improper manner could result in warranty being refused.

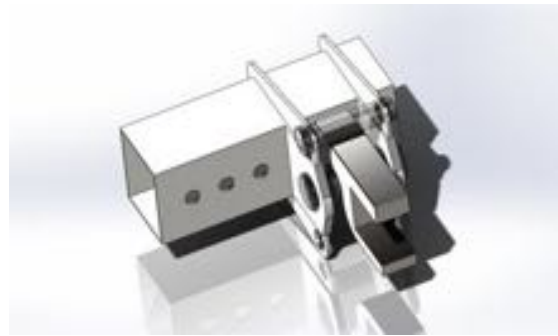
Read the operating instructions before use..



Basic set



Pedestal mount for different models



Instructions

Item Part No

Page 1.	Instruction for Scania R series 1997 to 2018	A10
Page 2.	Instruction for MAN/Renault/Mercedes	P07
Page 3.	Instruction for MAN	Photo's
Page 4.	Instruction for Volvo FH/FM 1994 to 2014	P06
Page 4.B	Instruction and photos for Volvo 1994 to 2014	P06
Page 5.	Instruction DAF XF and DAF CF	P10 &P13
Page 6.	Description of different pedestal brackets	Photos
Page 7.	Instruction for Volvo FH/Renault T 2013 onwards	P25
Page 8.	Instruction DAF XF Euro 6 2013 onwards	P24
Page 9.	Instruction for type 1 spreader bar (pinned)	TRA- 01
Page 10.	Instruction for winch eyes	A12
Page 11.	Instruction for Scania R and S series from 2017	P70
Page 12.	Instruction for trailer coupling	AK01
Page 13.	Instruction for axle securing chain	KT-110
Page 14.	Instruction for spanner holder	SH-05
Page 14.B	Instruction for lightboard carrier	LB-054
Page 15.	Instruction for fork holder adaptor	VH 001
Page 16.	Instruction for alluminium pin hook storage	P01
Page 17.	Instrution to tap thread on Volvo and Renault	38578
Page 18.	Descripton of winchplates	Lp 20x2 10x2 10x1 10x2
Page 19.	Instructions for Scania R Winch eyes	SCA2627
Page 19. B	2017 Scania R and S spreader bar (threaded)	TRA2627
Pagee 20.	VDZ Storage system	Frame L&R
Page 20.B	VDZ Crossbar for winch eyes for VDZ system	DW BALK



1.

VDZ A 10

Scania R Series from 1997 to 2018



For this model there are 2 hooks, these can be coupled behind the lower grille to the existing towing eyes, without disassembling the bottom grille. (grill pulls downwards)

*** make sure that the locking hooks are facing each other, the set consists of a left and right hook.**

2.

P07 Mercedes/Renault and MAN

This adaptor pin can be used for the above trucks.

The VDZ P07 pin is the most vulnerable pin in the kit. The reason for this is sometimes the thread cutting for the tow eyes from the truck manufacturers are not always so precise.

Before use, the thread of the vehicle must be cleaned with the MAN, Mercedes, Renault tap thread cutter before the pin is mounted.

Before you try to screw in the VDZ pin, you must be able to screw the tap cutter by hand to the end, if not you will damage the VDZ pin

VDZ P07 RENAULT AE



VDZ P07 MERCEDES ACTROS





3.

VDZ P07 M.A.N



thread cutter number VDZ 26580

In these 3 models **always** use the thread cutter VDZ 26580, with oil and turn the cutter into the chassis until the end!!!



Key set 75 mm and 55 mm

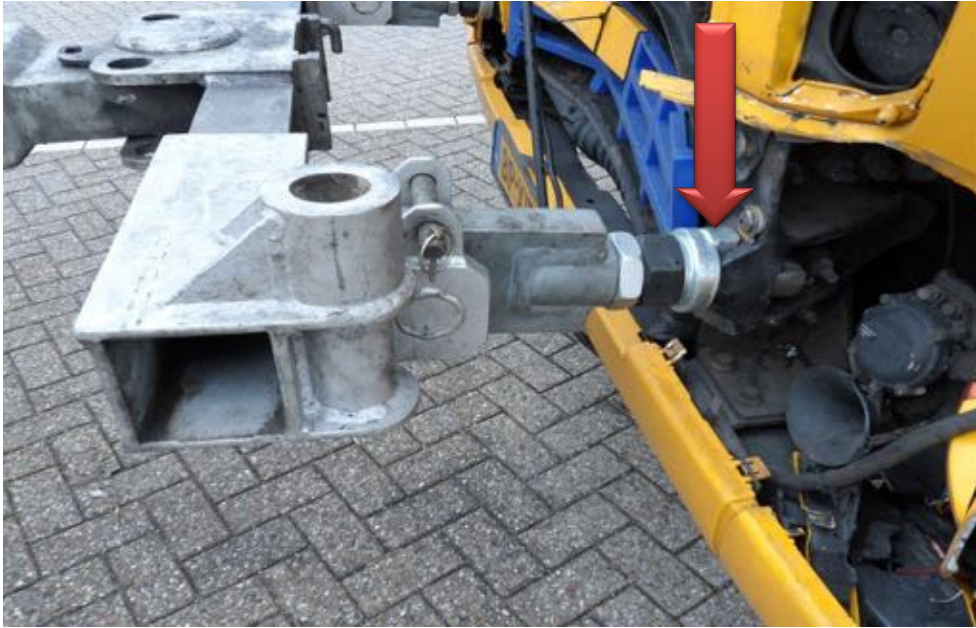
4.

VDZ P 06 Volvo FH /FM up to 2013

This Pin has a ring where the block has to come to the top during assembly

(See example)

)

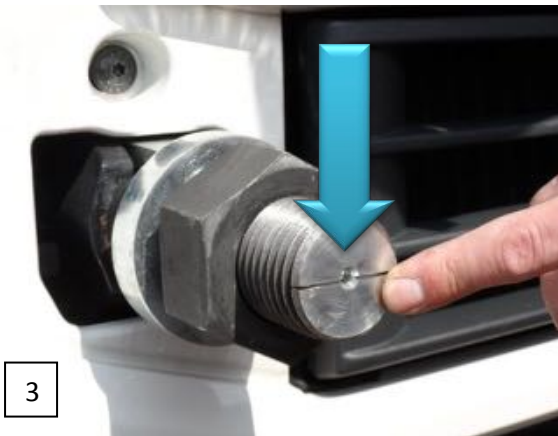


On the front of the pin there is a dash line which should be **horizontal** during assembly.

With some older types, the upper thick block does not fit, if this happens then turn the ring a half turn and mount the smaller block upwards.

4.B





1. Remove grille cover.
2. Push the pin vertically into the chassis frame.
3. Turn the pin until the line is horizontal.
4. Tighten the lock nut.
5. Mount the lift hook.
6. Attach and secure with locking pin.

VDZ P 13 DAF XF 105 upto 2014

VDZ P 10 DAF CF 85 upto 2014

During assembly, these DAF P 13 and P 10 pins are almost the same, the difference being that the "head" that goes into the chassis of a DAF CF is larger than that of a DAF XF.

At the front, remove the plastic cover in the grille and insert the pins into the hole, turn the pin so that the line is horizontal. Tighten locknut and mount threaded sleeve A 11.

Pay attention to the thick nut, this must be properly tightened.

DAF CF



DAF XF

Pedestals.

The pedestal bracket is made of high-quality steel.

These pedestals are available in various sizes and versions to suit all trucks. Increased height versions for Rotator crane or Zacklift and custom versions available on request



With the DAF CF, the sliding bars must be turned inwards (narrow)

During towing with the VDZ adaptors, the boom and t bar must be level as to not wear the equipment prematurely when turning.



7.

VDZ P 25 VOLVO FH and Renault T

At the front in the grille, remove the left and right plastic grille part with a small screwdriver. Turn the pin into the thread with oil and fix VDZ P 25 to the end with the small spanner wrench. (A50)

VDZ P 25 Renault/ VOLVO FH/FM

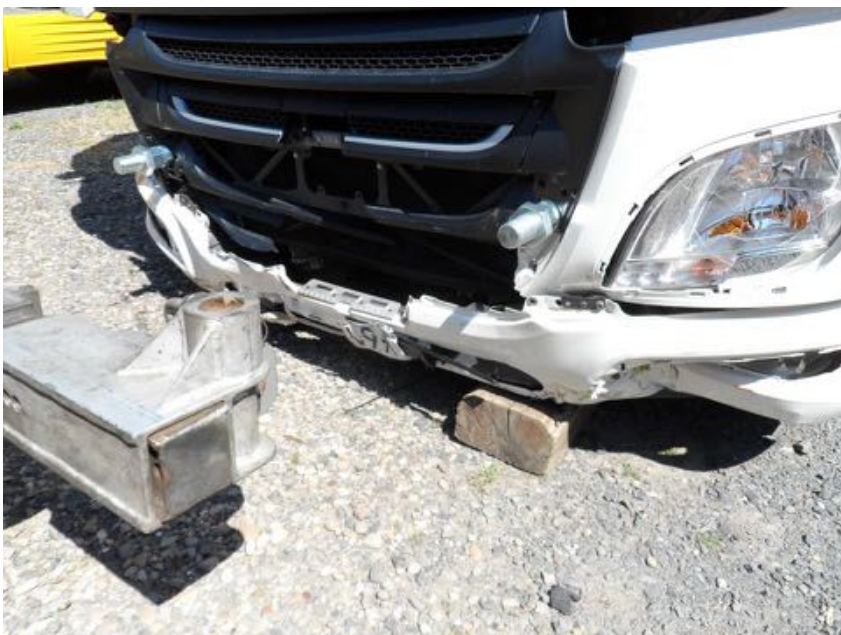




8.

VDZ P 24 DAF XF/CF 2013 onwards

Remove the plastic cover at the front left and right.



Screw the pin in the front (turn the pins in with a little oil)



Drives always with the boom in a flat (horizontal) position.

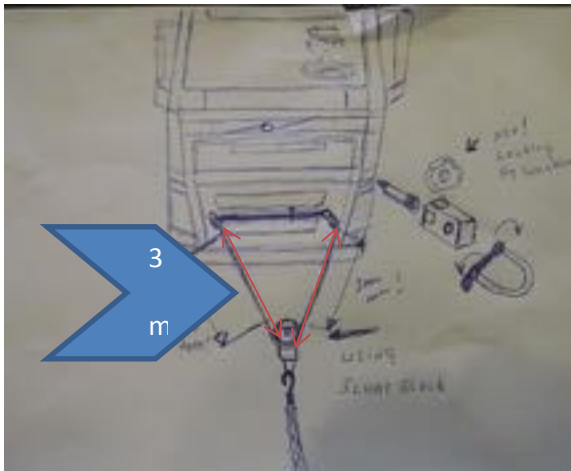
9.

VDZ TRA 01 Spreader bar. (pinned version)

The pinned spreader beam is suitable for 7 different chassis models.

The cross beam must be used during winching where part VDZ A 12 is used.





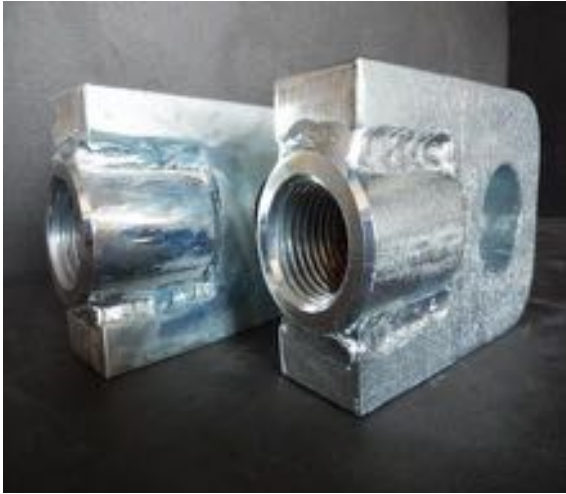
10.

VDZ A 12

Winch adaptors with holes.

The winch heads are screwed to the VDZ thread / pin end at the front, making sure the thread is clean and lightly lubricated before use. During winching, the winch heads VDZ A 12 must be able to **turn freely at all times, so do not tighten the lock nut!**

Pay attention during winching from the side. Horizontal side winching exerts more force into the VDZ adaptor. When winching from the side, the force of both the VDZ Pin and the chassis is increased always use the crossbar when winching forces are not calculated. **Do not exceed a maximum of 3.5 tons of sideways winching and always use the crossbar when winching.**



Never winch on one VDZ adaptor only, always use both adaptors with appropriate slings/chains !!!!

11.

VDZ P70 SCANIA R and S Models from 2017 onwards.

The new R and S series Scania have no tow eyes mounted in the front chassis, as with the previous model, an adapter has been made which is screwed to the front of the chassis with 3 Allen bolts.

These Allen bolts are made of high quality steel and must be fitted with 100 Nm. Tightened with hand tools only (1/2" Ratchet), please do not tighten with a pneumatic or electric hammer gun

Advice: always use the threaded spreader bar with the new model S and R Scania when towing (model VDZ TRAV SCANS-S)

Instruction: at the front of the grille open plastic caps with a screwdriver remove adapter with Allen screws.



Tighten with 100nm, **do not use an air/electric hammer gun.**

12.

Extra accessories

VDZ AK-01

Tow bar coupling suitable for mounting on all model variants of the VDZ pin adaptors



- . Fasten the lock nut securely

13.

VDZ KT110 Front axle securing chains.

These front axle securing chains are suitable for lifting the axle from the ground during lifting. The chains are a combination of chain and steel wire.

Advantages of using the axle chains allow the operator to run the casualty vehicle lower to the floor if overall running height is an issue, especially in mainland Europe where height restrictions apply. The Steel wire has built in security and breaks above 3 tons. (this allows trucks with front air suspension to break the wire if the operator doesn't release the air from the front suspension bellows before lifting)



*** Note – when using axle securing chains, lower the front suspension to the floor, attach securing chains and turn off air supply to front air bellows, lift with tow truck.**

14.

VDZ SHP05 Key holder

The key holder is made of plastic for mounting on the door or can be mounted inside the tow truck lockers.



VDZ LB054. Light bar support.

This support can be used to mount a rear facing lighting board using the VDZ pins, it acts as a light bar holder



15.

VDZ VH 001

Fork holder set. The fork holders fit on the pivot bars of the pedestals and can be used in combination with any standard type forks



16.

VDZ P01

Aluminum pins for storage of A11 and A12 .



17.

VDZ 38578 Tap.

This tap can be used for the new Volvo and Renault Trucks

Photo follows:

Winch plates, these are in 4 different versions.

These winch plates are suitable for lateral winching on a chassis.

VDZ WP 10/1 width 10 cm with mouth opening from 1 cm

VDZ WP 10/2 width 10 cm with mouth opening from 2 cm

VDZ WP 20/1 width 20 cm with mouth opening from 1 cm

VDZ WP 20/2 width 20 cm with mouth opening from 2 cm



*** Always attach winch plates to a location in the chassis opposite a cross beam in the chassis, with a trailer never at the end of the chassis. (no reinforcement).**

18.

TRA SCA2627 Scania R series winch eyes. (fixed spreader bar option)

TRA SCA2627 are suitable for winching and

hoisting for a Scania R series from 1998 up to and including 2018



Do NOT use the intermediate beam when winching, **only when lifting**.
This allows the winch eyes to swivel when winching to minimize the strain on each winch point.

19.

VDZ storage system..

VDZ Frame L & R Steel.

VDZ Frame L & R Inox (stainless steel)

VDZ spreader bars storage frame and spreader bars





After use, clean all VDZ parts correctly to ensure longevity and safe use next time.

20.

. Our company and address details



VDZ Hefsystemen B.V.

Lange Hofstedestraat 3, 4116 EX Buren

Telefoon : +31 (0)653 186 008

Fax : +31 (0)344 571 719

E-mail : info@vdzsystemen.nl

Internetsite : www.vdzsystemen.nl

Bankrelatie : Rabobank

Rekeningnr. : 129039756

Swift code : Rabo NL 2U

Iban nr. : NL 69RABO0129 0397 56